



Mount Cotton  
State School

# Student Code of Conduct

## ***Every student succeeding***

***Every student succeeding is the shared vision of Queensland state schools. Our vision shapes regional and school planning to ensure every student receives the support needed to belong to the school community, engage purposefully in learning and experience academic success.***

Queensland Department of Education  
State Schools Strategy 2020-2024

## Contact Information

---

Postal address: 1246 Mount Cotton Road, Mount Cotton 4165

---

Phone: 07 3822 0444

---

Email: [principal@mtcottonss.eq.edu.au](mailto:principal@mtcottonss.eq.edu.au)

---

School website address: [mtcottonss.eq.edu.au](http://mtcottonss.eq.edu.au)

---

Contact Person: Meagan Steward (Principal)

---

## Endorsement

---

Principal Name: Meagan Steward

---

Principal Signature:

---

Date: 8.12.2020

---

---

P/C President: Jess Zutt

---

P/C President Signature:

---

Date: 8.12.2020

---

# Contents

Purpose	4
Principal's Foreword	5
P&C Statement of Support	6
School Captains' Statement	7
Consultation	8
Data Overview	9
Review Statement	9
School Opinion Survey	10
School Disciplinary Absences (SDA)	11
Learning and Behaviour Statement	12
Multi-Tiered Systems of Support	12
Consideration of Individual Circumstances	13
Student Wellbeing	14
Student Support Network	16
Whole School Approach to Discipline	18
Differentiated and Explicit Teaching	21
Focussed Teaching	22
Intensive Teaching	23
Legislative Delegations	24
Legislation	24
Delegations	24
Disciplinary Consequences	25
School Policies	29
Temporary removal of student property	29
Use of mobile phones and other devices by students	31
Preventing and responding to bullying	33
Appropriate use of social media	41
Restrictive Practices	43
Critical Incidents	44
Related Procedures and Guidelines	45
Resources	46
Conclusion	47

## Purpose

Mount Cotton State School is committed to providing a safe, respectful and disciplined learning environment for all students, staff, parents and visitors, where everyone has the opportunity to reach their full potential and develop their love of learning. We are striving to grow Clever, Creative and Caring children who are resilient, respectful and take responsibility for their learning and behaviour. To do so, we are embedding consistent expectations underpinned by clear processes supported by all members of our community.

Mount Cotton State School Student Code of Conduct sets out the responsibilities and processes we use in our school to promote a productive, effective whole school approach to discipline.

Its purpose is to facilitate high standards of behaviour from all in the school community, ensuring learning and teaching in our school is prioritised, where all students are able to experience success and staff enjoy a safe workplace.

## Principal's Foreword

Mount Cotton State School has a long and proud tradition of providing high quality education to students. We believe strong, positive relationships between all members of our school are the foundation to supporting the success of all students.

Mount Cotton State School has three core values; Respect, Responsibility and Resilience.

<b>Respect</b>	for self and others
<b>Responsibility</b>	be accountable for your actions, contribute to society and civic life and take care of the environment
<b>Resilience</b>	show self-control, resolve differences in constructive, non-violent and peaceful ways, try your best and persevere

These values have been used in the development of this Student Code of Conduct, with the aim of helping shape and build the skills of all our students to be confident, self-disciplined and caring young people. Our school staff believe that communication and positive connections with other people are the most valuable skills our communities need now and in the future.

Mount Cotton State School staff take an educative approach to discipline, that behaviour can be taught and that mistakes are opportunities for everyone to learn. Our Student Code of Conduct provides an overview of the school's local policies on use of mobile phones and other technology, removal of student property and the approach to preventing and addressing incidents of bullying. It also details the steps school staff take to educate students about these policies and how students are explicitly taught the expected behaviours. Finally, it details the consequences that may apply when students breach the expected standards of behaviour, including the use of suspension or exclusion.

I thank the students, teachers, parents and other members of the community for their thoughts in bringing this Mount Cotton State School Student Code of Conduct together. Your interest and views shared through the process of developing this document has been invaluable. It provides a clear explanation of what we expect from students and how we will support them to meet those expectations.

## P&C Statement of Support

As president of Mount Cotton State School P&C Committee, I am proud to support the new Student Code of Conduct. The P&C have had an opportunity to contribute and provide feedback on the document. This has been an important aspect in the development of the Mount Cotton State School Student Code of Conduct, as the awareness and involvement of parents is critical to ensuring all adults are able to support the students of the school to meet the set expectations.

We encourage all parents to familiarise themselves with the Mount Cotton State School Student Code of Conduct, and to take time to talk with their children about the expectations and discuss any support they may need. In particular, we want to emphasise the systems in place to help students affected by bullying.

Bullying is a community-wide issue in which we all have a role to play in combating; however, it can have particularly devastating impacts on our young people. It is important that every parent and child of Mount Cotton State School knows what to do if subjected to bullying, regardless of where it occurs. This includes cyberbullying, through the misuse of social media or messaging. It is important that parents and children know that schools provide support and advice to help address problems of bullying, and the flowchart on page 35 provides an excellent starting point to understand how to approach the school about these types of problems.

Any parents who wish to discuss the Mount Cotton State School Student Code of Conduct and the role of families in supporting the behavioural expectations of students are welcome to contact myself or to join the Mount Cotton State School P&C Association. It is with your support that we can work collaboratively with school staff to ensure all students are safe, supported and appropriately supported to meet their individual social and learning needs.

## School Captains' Statement

On behalf of the student body at Mount Cotton State School, we endorse the Student Code of Conduct for 2021. We have represented the Mount Cotton State School students via our Student Council, putting forward the views of young people on a range of issues affecting their lives at school. Throughout the year, the School Leaders will continue to work with the school leadership team and the Mount Cotton State School P&C Association on how the Student Code of Conduct is working, identify areas for improvement and present alternative options or suggestions for consideration.

Any student who has questions or issues they would like raised by the School Captains are first encouraged to talk with their Student Council representatives, however, you are also invited to approach any School Captain directly.

**2020 School Captains:** Ethan Cranefield

**Date:** 08.12.2020

**2020 School Captain:** Grace D'Castro

**Date:** 08.12.2020

## Consultation

The consultation process used to inform the development of the Mount Cotton State School Student Code of Conduct occurred in three phases.

In the first phase, we formed a behaviour committee in 2018. During these meetings, we examined a range of data sets on student and staff attendance, school disciplinary absences (SDA) and outcomes from the most recent School Opinion Survey. We identified strengths and successes from our previous school behaviour plan, and areas for further development. This included the creation of the Mount Cotton State School Behaviour Expectation matrix with school staff.

In 2019, the school Leadership Team attended professional development on the Student Code of Conduct and restrictive practices. Our Mount Cotton Wellbeing Team continued to analyse data sets and apply proactive measures to support learning and behaviour including designing our Staff and Student Wellbeing framework.

In 2020, our Every Student Counts committees continued to review our data sets and our current procedures.

A draft Student Code of Conduct was prepared and distributed for comment to all members of the school community in Term 4, 2020. The finished version, incorporating suggested changes and feedback, was presented to the P&C Association meeting in November 2020 for endorsement. The P&C Association unanimously endorsed the Mount Cotton State School Student Code of Conduct for implementation in 2021.

A communication strategy has been developed to support the implementation of the Mount Cotton State School Student Code of Conduct, including information at parent information evenings, promotion through the school website, fortnightly newsletter and our school Facebook page. Any families who require assistance to access a copy of the Mount Cotton State School Student Code of Conduct, including translation to a suitable language, are encouraged to contact the principal.

### **Review Statement**

The Mount Cotton State School Student Code of Conduct will undergo annual minor updates to reflect changing circumstances, data and staff. A fulsome review is conducted every four years in line with the scheduled review process for the School Planning, Reviewing and Reporting cycle.

## Data Overview

This section is used to report on key measures related to student discipline, safety and wellbeing using existing data sets available to all schools. This provides an open and transparent reporting mechanism for the school community on the perceptions of students, parents and staff about school climate, attendance and school disciplinary absences.

The Parent, Student and Staff Satisfaction data from 2017 to 2019 in the tables below is drawn from the School Opinion Survey. The School Opinion Survey is an annual collection designed to obtain the views of parents/caregivers, students and school staff from each school on what they do well and how they can improve.

Opinions on the school, student learning, and student wellbeing are sought from a parent/caregiver in all families and a sample of students from each state school.

Opinions on the school as a workplace are sought from all school staff and principals. There are additional questions for teaching staff on their confidence to teach and improve student outcomes. Principals are also asked about their confidence to lead the school and improve student outcomes.

There are four different confidential surveys for

- parents
- students
- staff
- principals.

For more information, refer to [frequently asked questions](#) page.

## School Opinion Survey – 2017 to 2020

### Parent opinion survey

Performance measure			
Percentage of parents/caregivers who agree# that:	2017	2018	2019
their child is getting a good education at school (S2016)	92.4%	95.7%	98.7%
this is a good school (S2035)	92.4%	93.4%	97.4%
their child likes being at this school* (S2001)	95.5%	96.4%	96.2%
their child feels safe at this school* (S2002)	97.0%	95.7%	96.9%
their child's learning needs are being met at this school* (S2003)	89.4%	94.2%	92.5%
their child is making good progress at this school* (S2004)	92.4%	93.5%	95.0%
teachers at this school expect their child to do his or her best* (S2005)	93.9%	97.8%	98.7%
teachers at this school provide their child with useful feedback about his or her school work* (S2006)	90.9%	91.1%	94.9%
teachers at this school motivate their child to learn* (S2007)	89.4%	94.1%	95.0%
teachers at this school treat students fairly* (S2008)	93.9%	92.6%	94.9%
they can talk to their child's teachers about their concerns* (S2009)	97.0%	97.8%	97.5%
this school works with them to support their child's learning* (S2010)	92.2%	94.2%	94.8%
this school takes parents' opinions seriously* (S2011)	86.2%	83.8%	85.5%
student behaviour is well managed at this school* (S2012)	83.1%	85.0%	83.3%
this school looks for ways to improve* (S2013)	87.7%	89.6%	92.2%
this school is well maintained* (S2014)	95.5%	94.2%	93.8%

### Student opinion survey

Performance measure			
Percentage of students who agree# that:	2017	2018	2019
they are getting a good education at school (S2048)	94.9%	96.6%	96.4%
they like being at their school* (S2036)	94.1%	93.2%	92.0%
they feel safe at their school* (S2037)	94.1%	90.6%	92.9%
their teachers motivate them to learn* (S2038)	97.5%	93.1%	93.7%
their teachers expect them to do their best* (S2039)	98.3%	98.3%	99.1%
their teachers provide them with useful feedback about their school work* (S2040)	95.8%	95.7%	94.6%
teachers treat students fairly at their school* (S2041)	91.5%	88.0%	87.3%
they can talk to their teachers about their concerns* (S2042)	91.6%	87.0%	89.2%
their school takes students' opinions seriously* (S2043)	91.5%	89.7%	87.0%
student behaviour is well managed at their school* (S2044)	84.0%	82.1%	80.4%
their school looks for ways to improve* (S2045)	95.8%	93.1%	92.8%
their school is well maintained* (S2046)	95.0%	94.0%	91.8%
their school gives them opportunities to do interesting things* (S2047)	96.6%	91.4%	92.7%

## Staff opinion survey

Performance measure			
Percentage of school staff who agree <sup>#</sup> that:	2017	2018	2019
they enjoy working at their school (S2069)	100%	96%	95.8%
they feel that their school is a safe place in which to work (S2070)	100%	94.0%	97.9%
they receive useful feedback about their work at their school (S2071)	94.6%	84.0%	95.8%
they feel confident embedding Aboriginal and Torres Strait Islander perspectives across the learning areas (S2114)	89.7%	77.1%	89.5%
students are encouraged to do their best at their school (S2072)	100%	100%	100%
students are treated fairly at their school (S2073)	98.2%	96.0%	97.9%
student behaviour is well managed at their school (S2074)	89.3%	88.0%	91.7%
staff are well supported at their school (S2075)	94.6%	92.0%	95.8%
their school takes staff opinions seriously (S2076)	92.7%	89.6%	93.8%
their school looks for ways to improve (S2077)	100%	98.0%	100%
their school is well maintained (S2078)	98.2%	96.0%	97.9%
their school gives them opportunities to do interesting things (S2079)	96.4%	96.0%	93.8%

\* Nationally agreed student and parent/caregiver items

# 'Agree' represents the percentage of respondents who Somewhat Agree, Agree or Strongly Agree with the statement.

DW = Data withheld to ensure confidentiality.

## School Disciplinary Absences (SDA)

Principals use a range of disciplinary consequences to address inappropriate behaviour. Suspensions, exclusions and cancellations of enrolment are only used as a last option for addressing serious behaviour issues. Principals balance individual circumstances and the actions of the student with the needs and rights of school community members.

All state schools are required to report School Disciplinary Absences (SDA) for the school year in their school annual report. There are four main categories of SDA: short suspension, long suspension, exclusion and charge-related suspension.

The following table shows the count of incidents for students for each type of school disciplinary absence reported at the school.

MOUNT COTTON STATE SCHOOL DISCIPLINARY ABSENCES			
Type	2017	2018	2019
Short Suspensions – 1 to 10 days	9	11	5
Long Suspensions – 11 to 20 days	0	0	0
Charge related Suspensions	0	0	0
Exclusions	0	0	0

# Learning and Behaviour Statement

Everyone brings their own sets of personal beliefs to a school community. These beliefs influence their decisions, behaviour and social practices. It is reasonable to expect that not everyone will share the same sets of beliefs, and this contributes to a richly diverse social environment in each school. It can also contribute to differences in expectations and force us to reflect on our own understanding of what we consider acceptable and unacceptable. We encourage any student or parent to make an appointment with the principal to discuss the model of behaviour support and discipline used at this school.

## Multi-Tiered Systems of Support

Mount Cotton State School uses multi-tiered systems of support (MTSS) as the foundation for our integrated approach to learning and behaviour. MTSS is a preventative, differentiated model grounded in practical strategies, targeted planning and data-informed decision-making. Based on a problem-solving model, in a MTSS school staff match increasingly intensive interventions to the identified needs of individual students.

Tier	Prevention Description
1	<p><b>All students</b> (100%) in the school receive support for their academic and behavioural development. Focus is on the whole-school implementation of both the Australian Curriculum and behaviour expectations. This involves:</p> <ul style="list-style-type: none"><li>• teaching behaviours in the setting they will be used</li><li>• being consistent when addressing challenging behaviour, while taking developmental norms and behavioural function into account</li><li>• providing refresher lessons and targeted recognition throughout the school year so skills are ready and likely to be used when students need them</li><li>• asking students and their families for their perspectives on school climate, instruction, reinforcement, and discipline so improvements in Tier 1 may be made.</li><li>• lessons taught from the You Can Do It Program</li></ul>
2	<p>Targeted instruction and supports for <b>some students</b> (10-15%) are more intense than Tier 1 services, providing more time and specialisation in services from a range of school-based staff to enable students to meet the required academic and behavioural standards.</p> <p>Tier 2 supports build on the lessons provided at Tier 1, and may prevent the need for more intensive interventions. Tier 2 supports are provided to small groups of students with similar needs, offering more time and/or detailed instruction on the Australian Curriculum or particular aspects of our behaviour expectations. The types of interventions offered at this level will vary according to the needs of each school's student body, but all have certain things in common:</p>

	<ul style="list-style-type: none"> <li>• there is a clear connection between the skills taught in the interventions and the school-wide expectations</li> <li>• interventions require little time of classroom teachers and are easy to sustain</li> <li>• variations within each intervention are limited</li> <li>• interventions have a good chance of working (e.g. they are “evidence-based” interventions that are matched to the student’s need).</li> <li>• Zones of Regulation Program</li> <li>• Intensive You Can Do It lessons</li> </ul> <p>If the school data indicates that more than 10-15% of students require targeted services, then a review of Tier 1 is needed to address the basic implementation and quality of instruction.</p>
3	<p>Individualised services for <b>few students</b> (2-5%) who require the most intensive support a school can provide. These are usually delivered in very small groups or on an individual basis.</p> <p>Tier 3 supports continue to build on the lessons and supports provided at Tiers 1 and 2, becoming more individualised and more intensive until teams can identify what is needed for a student to be successful. Tier 3 supports are based on the underlying reasons for a student’s behaviour (their Functional Behaviour Assessment) and should include strategies to:</p> <ul style="list-style-type: none"> <li>• PREVENT problem behaviour</li> <li>• TEACH the student an acceptable replacement behaviour</li> <li>• REINFORCE the student’s use of the replacement behaviour</li> <li>• MINIMISE the payoff for problem behaviour.</li> </ul> <p>Tier 3 supports exist along a continuum. Many students can benefit from a simple (or brief) Functional Behaviour Assessment (FBA) that identifies unique strategies to help the student achieve success. A smaller percentage of students may require a more comprehensive FBA that includes a more thorough process for data collection, teaming, and problem solving. A much smaller percentage of students may need an intensive FBA and wraparound plan that includes personnel from outside agencies and rigorous problem solving procedures.</p> <p>If the school data indicates that more than 2-5% of the student population requires individualised services, a review of Tier 1 and Tier 2 supports and organisation is recommended.</p>

## Consideration of Individual Circumstances

Staff at Mount Cotton State School take into account students’ individual circumstances, such as their behaviour history, disability, mental health and wellbeing, religious and cultural considerations, home environment and care arrangements, when teaching expectations, responding to inappropriate behaviour or applying a disciplinary consequence.

In considering the individual circumstances of each student, we recognise that the way we teach, the support we provide and the way we respond to students will differ. This reflects the principle of equality, where every student

is given the support they need to be successful. This also means that not everyone will be treated the same, because treating everyone the same is not fair. For example, some students need additional support to interpret or understand an expectation. Others may benefit from more opportunities to practise a required skill or behaviour. For a small number of students, the use of certain disciplinary consequences may be considered inappropriate or ineffective due to complex trauma or family circumstances. These are all matters that our teachers and principal consider with each individual student in both the instruction of behaviour and the response to behaviour.

Our teachers are also obliged by law to respect and protect the privacy of individual students, so while we understand the interest of other students, staff and parents to know what punishment another student might have received, we will not disclose or discuss this information with anyone but the student's family. This applies even if the behavioural incident, such as bullying, involves your child. You can be assured that school staff take all matters, such as bullying, very seriously and will address them appropriately. We expect that parents and students will respect the privacy of other students and families.

If you have concerns about the behaviour of another student at the school, or the way our staff have responded to their behaviour, please make an appointment with the principal to discuss the matter.

## Student Wellbeing

Mount Cotton State School offers a range of programs and services to support the wellbeing of students in our school. We encourage parents and students to speak with their class teacher if they would like individual advice about accessing particular services.

Learning and wellbeing are inextricably linked — students learn best when their wellbeing is optimised, and they develop a strong sense of wellbeing when they experience success in learning. The [student learning and wellbeing framework](#) supports state schools with creating positive school cultures and embedding student wellbeing in all aspects of school life through connecting the learning environment, curriculum and pedagogy, policies, procedures and partnerships for learning and life.

### Curriculum and pedagogy

Schools build the foundations for wellbeing and lifelong learning through curriculum embedding [personal and social capabilities](#) (self-awareness, self-management, social awareness and social management) in the implementation of the [P–12 curriculum, assessment and reporting framework](#).

Schools acknowledge the positive impact that a meaningful relationship between teacher and students can have on students' academic and social outcomes. As part of the school curriculum at Mount Cotton State School, we provide age-appropriate conversations that reinforces public health and safety messages.

### Policy and expectations

Within a school community there are specific health and wellbeing issues that will need to be addressed for the whole school, specific students, or in certain circumstances.

#### *Drug education and intervention*

Mount Cotton State School implements drug intervention measures for students involved in drug-related incidents at school, during school activities or while in school uniform. This is managed to protect the health and safety of the student/s involved, other students, school staff and the wider community.

#### *Specialised health needs*

Mount Cotton State School works closely with parents to ensure students with specialised health needs, including those requiring specialised health procedures, have access to a reasonable standard of support for their health needs whilst attending school or school-based activities.

This means that appropriate health plans are developed and followed for students with specialised health needs, that staff are aware of the student's medical condition and that an appropriate number of staff have been trained to support the student's health condition.

#### *Medications*

Mount Cotton State School requires parent consent and medical authorisation to administer any medication (including over-the-counter medications) to students. For students requiring medication to be administered during school hours, the school can provide further information and relevant forms.

For students with a long-term health condition requiring medication, parents need to provide the school with a [Request to administer medication at school](#) form signed by the prescribing health practitioner.

Mount Cotton State School maintains a minimum of one adrenaline auto-injector and asthma reliever/puffer, stored in the school's first aid kit to provide emergency first aid medication if required.

#### *Mental health*

Mount Cotton State School implements early intervention measures and treatments for students where there is reasonable belief that a student has a mental health difficulty. This includes facilitating the development, implementation and periodic review of a [Student Plan](#).

#### *Suicide prevention*

Mount Cotton State School staff who notice suicide warning signs in a student should seek help immediately from the school guidance officer, senior guidance officer, school chaplain or other appropriate staff.

When dealing with a mental health crisis, schools call 000 when there is an imminent threat to the safety of student in the first instance, and where necessary provide first aid. In all other situations, Mount Cotton State School staff follow suicide intervention and prevention advice by ensuring:

- the student is not left alone
- their safety and the safety of other students and staff is maintained

- students receive appropriate support immediately
- parents are advised
- all actions are documented and reported.

#### *Suicide postvention*

In the case of a suicide of a student that has not occurred on school grounds, Mount Cotton State School enacts a postvention response, by communicating with the family of the student and ensuring immediate support is provided to students and staff who may be affected.

Where a suicide has occurred on school grounds or at a school event, Mount Cotton State School staff immediately enact the School Emergency Management Plan and communicate with the family of the student and ensure immediate support is provided to students and staff who may be affected.

## Student Support Network

Mount Cotton State School is proud to have a comprehensive Student Support Network in place to help the social, emotional and physical wellbeing of every student. In addition to the assistance provided by class teachers, we have a team of professionals whose dedicated roles are to help ensure our school is an inclusive, nurturing environment.

Students can approach any trusted school staff member at Mount Cotton State School to seek assistance or advice. If they are unable to assist they will provide guidance and help ensure the student is connected to the appropriate representative of the Student Support Network.

Parents who would like more information about the student support roles and responsibilities are invited to contact the school and the appropriate staff member will make contact.

Role	What they do
Chaplain	<ul style="list-style-type: none"> <li>• provides social, emotional, spiritual and practical support for students</li> <li>• helps students find a positive way to deal with issues ranging from family breakdown to bullying, to friendship and peer complications</li> <li>• Helps students feel safe and connected to the school community</li> </ul>
Classroom Teachers	<ul style="list-style-type: none"> <li>• responsible for student welfare of each student in their class.</li> <li>• ensures students feel safe and comfortable and want to come to school</li> <li>• nurtures a sense of belonging to their class.</li> <li>• implements the You Can Do It program</li> </ul>
Community Elder	<ul style="list-style-type: none"> <li>• provides support and advice for students, staff and parents in order to enhance the educational experience for Indigenous and non-Indigenous students.</li> </ul>
Guidance Officer	<ul style="list-style-type: none"> <li>• provides a comprehensive student support program within the school environment offering counselling with students on a one-on-one basis or in a group setting</li> <li>• assists students with specific difficulties, acting as a mediator or providing information on other life skills</li> </ul>

	<ul style="list-style-type: none"> <li>• liaises with parents, teachers, or other external health providers as needed as part of the counselling process.</li> </ul>
Leadership Team	<ul style="list-style-type: none"> <li>• coordinates transition to secondary for students moving from Year 6 to Year 7</li> <li>• lead role for implementation of our You Can Do It program.</li> <li>• monitors student attendance data.</li> </ul>
Registered Nurse	<ul style="list-style-type: none"> <li>• works with school staff to build their competence and confidence to safely manage procedures and interventions required by students with specialised health needs</li> <li>• provides assessment, health management planning, training and ongoing support and supervision for students with specialised health needs.</li> </ul>

It is also important for students and parents to understand there are regional and statewide support services also available to supplement the school network. These include Principal Advisor Student Protection, Mental Health Coach, Autism Coach, Inclusion Coach, Success Coach, Advisory Visiting Teachers, Positive Learning Centre staff and Senior Guidance Officers. For more information about these services and their roles, please speak with a member of the Leadership Team.

## Whole School Approach to Discipline

Mount Cotton State School uses a multi-tiered system of support for discipline in the school. This is a whole-school approach, used in all classrooms and programs offered through the school, including sporting activities and excursions.

We use this whole school approach to discipline to :

- analyse and improve student behaviour and learning outcomes
- ensure that only evidence-based practices are used correctly by teachers to support students
- continually support staff members to maintain consistent school and classroom improvement practices.

At Mount Cotton State School we believe discipline is about more than punishment. It is a word that reflects our belief that student behaviour is a part of the overall teaching and learning approach in our school. Our staff take responsibility for making their expectations clear, for providing supportive instruction about how to meet these expectations and strive to use behavioural incidents as opportunities to re-teach.

The development of the Mount Cotton State School Student Code of Conduct is an opportunity to explain our whole school approach with parents and students, and gain their support to implement a consistent approach to teaching behaviour. The school language and school expectations can be used in any environment, including the home setting for students. Doing everything we can do to set students up for success is a shared goal of every parent and school staff member.

Any students or parents who have questions or would like to discuss the Student Code of Conduct are encouraged to speak with the class teacher or make an appointment to meet with the principal.

## Our Expectations

Our staff are committed to delivering a high quality of education for every student, and believe all adults in the school, whether visiting or working, should meet the same expectations in place for students, being Responsible, Respectful and Resilient.

### Students

Below are examples of what these expectations look like for students across the school. In addition, each classroom will have their own set of examples to help students and visitors understand the expectations and meet the standards we hold for everyone at Mount Cotton State School.

#### Respect

- Be polite.
- Listen attentively.
- Keep your hands and feet to yourself.
- Show care towards others.

#### Responsible

- Attend school regularly
- Be on time.
- Be organised.
- Follow school and class rules.
- Own your behaviour choices.
- Look after your belongings.
- Look after the school environment.

#### Resilient

- Work out problems in a fair and calm manner.
- Always try your best.
- Ask for help if you need it.
- Try to help others.
- Show self-control.

## Parents and staff

The table below explains the expectations for parents when visiting our school and the standards we commit to as staff.

### Respectful

<i><b>What we expect to see from you</b></i>	<i><b>What you can expect from us</b></i>
You make an appointment to speak with the class teacher or principal to discuss any matters relating to your child.	We will respond as soon as practicable to your request for an appointment and negotiate a mutually agreeable date and time with you.
You approach the class teacher or principal if you are concerned about the behaviour of a staff member, another student or parent.	We will work with every family to quickly address any complaints or concerns about the behaviour of staff, students or other parents.
You are respectful in your conversations at home about school staff.	We will ensure positive behaviours are role modelled for all students.
You leave and collect your child from the designated area at school.	We will give clear guidance about a designated area for parents to leave and collect students.
You respect school, student and staff privacy in your online communications.	We will act quickly to address social media issues that affect staff, students or families.

### Responsible

<i><b>What we expect to see from you</b></i>	<i><b>What you can expect from us</b></i>
You respect the obligation of staff to maintain student and family privacy.	We will maintain confidentiality about information relating to your child and family.
You ensure your children attend school every day, on time and notify the school promptly of any absences or changes in contact details.	We will create a safe, supportive and inclusive environment for every student.
You recognise people are different and will be non-judgemental, fair and equitable to others in the school community.	We will welcome and celebrate a diverse school community with recognition of significant social, cultural and historical events.
You share relevant information about your child's learning, social, emotional, well-being and behavioural needs with school staff.	We will share relevant information with you about your child's learning, social and behavioural progress at school.
You support your child to meet the learning and behavioural expectations at school.	We are clear about our learning and behavioural expectations, and contact you to provide regular

	feedback about your child's progress.
You stay informed about school news and activities by reading the school newsletter and other materials sent home by school staff.	We will use the electronic school newsletter as the primary means of notifying parents about school news, excursions or events.

## Resilient

<i><b>What we expect to see from you</b></i>	<i><b>What you can expect from us</b></i>
You take a positive, solution-focused approach to resolving complaints.	We will nominate a contact person for you to work with to resolve a school related complaint.
You seek out opportunities to provide positive feedback to the classroom teacher about their work with the class, a student or colleagues.	We will work closely with families to accommodate their personal needs, including work commitments, finances and family structure.
You help your child to see the strengths and benefits in diversity and difference in their classmates.	We will promote every child's individuality and build a cohesive, inclusive classroom and school culture.
You notice when others need help, parents, staff and students, and ask if there is anything you can do to assist.	We will check in with you about your child's needs or any support your family may require.

## Differentiated and Explicit Teaching

Mount Cotton State School is a disciplined school environment that provides differentiated teaching to respond to the learning needs of all students. This involves teaching expected behaviours and providing opportunities for students to practise these behaviours. Teachers reinforce expected behaviours, provide feedback and correction, and opportunities for practise.

Teachers at Mount Cotton State School vary what students are taught, how they are taught and how students can demonstrate what they know as part of this differentiated approach to behaviour. These decisions about differentiation are made in response to data and day-to-day monitoring that indicates the behavioural learning needs of students. This enables our teachers to purposefully plan a variety of ways to engage students; assist them to achieve the expected learning; and to demonstrate their learning.

There are three main systems to differentiation, as illustrated in the diagram below. This model is the same for both academic and pedagogical differentiation.

Differentiation occurs at each layer and becomes increasingly personalised

Differentiated and explicit teaching: for all students


Focused teaching: for identified students

Intensive teaching: for a small number of students

These three systems map directly to the tiered approach discussed earlier in the Learning and Behaviour section. For example, Tier 1 is differentiated and explicit teaching for all students, Tier 2 is focussed teaching for identified students and Tier 3 is intensive teaching for a small number of students. Each system provides progressively more personalised supports for students.

Every classroom in our school uses the Behavioural Expectations Matrix, illustrated below, as a basis for developing their behaviour standards. Using this matrix, the class teacher works with all students to explain exactly what each of the expectations look, sound and feel like in their classroom. The completed matrix is on display in every classroom, used as the basis of teaching expectations throughout the year and revisited regularly to address any new or emerging issues.

See Appendix – Mount Cotton State School Behaviour Expectations matrix.

 <b>Mount Cotton State School Behavioural Expectations</b>								
	All Areas	Learning Spaces	Play Areas	Toilets	Transitions/ Around Classrooms	Assemblies	Before School	Bus/Pick Up Zones
<b>I am Respectful when I:</b>	<ul style="list-style-type: none"> <li>- Follow instructions right away.</li> <li>- Use polite language and good manners.</li> <li>- Wear my school uniform with pride.</li> <li>- Care for the wildlife and natural features of our school.</li> </ul>	<ul style="list-style-type: none"> <li>- Raise my hand to speak and actively listen to others.</li> <li>- Politely ask permission to leave the classroom.</li> <li>- Respect the rights of others to learn.</li> <li>- Complete tasks neatly and efficiently.</li> <li>- Use equipment for it's intended purpose.</li> </ul>	<ul style="list-style-type: none"> <li>- Return borrowed equipment properly.</li> <li>- Play fairly.</li> <li>- Care for our environment.</li> <li>- Follow instructions right away.</li> <li>- Use equipment for it's intended purpose.</li> </ul>	<ul style="list-style-type: none"> <li>- Politely ask permission to leave the classroom.</li> <li>- Keep the area clean for others.</li> <li>- Respect the privacy of others.</li> </ul>	<ul style="list-style-type: none"> <li>- Walk on pathways—not through gardens.</li> <li>- Walk quietly so that classes may continue learning.</li> <li>- Listen to teacher instructions before transitioning.</li> </ul>	<ul style="list-style-type: none"> <li>- Use whole body listening.</li> <li>- Follow instructions right away.</li> <li>- Clap appropriately for speakers and awards recipients.</li> <li>- Remove my hat indoors.</li> </ul>	<ul style="list-style-type: none"> <li>- Follow instructions right away.</li> <li>- Keep waiting areas tidy.</li> </ul>	<ul style="list-style-type: none"> <li>- Follow instructions right away.</li> <li>- Walk in the appropriate waiting areas.</li> </ul>
<b>I am Responsible when I:</b>	<ul style="list-style-type: none"> <li>- Look after the belongings of myself and others.</li> <li>- Use the high 3 strategy to solve conflict.</li> <li>- Arrive at school on time every day.</li> <li>- Ensure I am in the right place at the right time.</li> <li>- Keep my hands and feet to myself.</li> </ul>	<ul style="list-style-type: none"> <li>- Bring all of my equipment and arrive at my lessons on time and ready to learn.</li> <li>- Actively listen to the teacher.</li> <li>- Look after the belongings of myself and others.</li> <li>- Enter and exit each room in an orderly manner.</li> </ul>	<ul style="list-style-type: none"> <li>- Play in the right area for my year level.</li> <li>- Put all rubbish in a bin.</li> <li>- Line up quickly in the appropriate area.</li> <li>- Wear shoes and a sun safe hat at all times.</li> <li>- Report unsafe behaviour to the teacher on duty.</li> </ul>	<ul style="list-style-type: none"> <li>- Use toilets during break times.</li> <li>- Turn off taps.</li> <li>- Report any problems to the office.</li> <li>- Close doors carefully.</li> <li>- Use toilets appropriately.</li> <li>- Choose a sensible bubble to go to the toilets with during class time.</li> <li>- Always flush and wash hands.</li> </ul>	<ul style="list-style-type: none"> <li>- Pack up my own equipment before transitioning.</li> <li>- Walk directly from one class to another.</li> <li>- Line up quietly before entering a classroom.</li> <li>- Walk to the left of the pathway.</li> <li>- Carry my belongings carefully and correctly.</li> </ul>	<ul style="list-style-type: none"> <li>- Care for the equipment in the hall.</li> <li>- Face the speaker.</li> <li>- Stand and sit quietly during assembly.</li> <li>- Enter and exit the hall calmly.</li> <li>- Walk when in the hall.</li> <li>- Stay with my class.</li> <li>- Keep my hands and feet to myself.</li> </ul>	<ul style="list-style-type: none"> <li>- Sit quietly in appropriate waiting areas.</li> <li>- Care for my own belongings.</li> <li>- Take my iPad to the library.</li> <li>- Leave my bike/scooter at the bike racks.</li> <li>- Cross roads using zebra crossings and when the green 'cross' man is showing at traffic lights.</li> <li>- Walk around car park areas and school grounds.</li> <li>- Stay inside the school grounds.</li> </ul>	<ul style="list-style-type: none"> <li>- Move quickly and quietly to appropriate waiting areas.</li> <li>- Have my bus pass ready.</li> <li>- Look for my car at pick up times.</li> <li>- Use pedestrian crossings.</li> <li>- Only leave the school grounds with a parent/teacher, or with a staff member to meet the bus.</li> </ul>
<b>I am resilient when I:</b>	<ul style="list-style-type: none"> <li>- Show self control.</li> <li>- Ask for help if I need it and try to help others.</li> </ul>	<ul style="list-style-type: none"> <li>- Show self control.</li> <li>- Ask for help if I need it and try to help others.</li> <li>- Try my best and persevere.</li> <li>- Work out problems in a fair and calm manner.</li> <li>- Stay positive.</li> <li>- Accept changes in routine.</li> </ul>	<ul style="list-style-type: none"> <li>- Show self control.</li> <li>- Ask for help if I need it and try to help others.</li> <li>- Be a good sport and play by the rules.</li> <li>- Use the high 3 Strategy to solve problems.</li> <li>- Accept changes in routine.</li> </ul>	<ul style="list-style-type: none"> <li>- Show self control.</li> <li>- Ask for help if I need it and try to help others.</li> </ul>	<ul style="list-style-type: none"> <li>- Show self control.</li> <li>- Ask for help if I need it and try to help others.</li> </ul>	<ul style="list-style-type: none"> <li>- Show self control.</li> <li>- Ask for help if I need it and try to help others.</li> <li>- Join with my class in their performances.</li> </ul>	<ul style="list-style-type: none"> <li>- Show self control.</li> <li>- Ask for help if I need it and try to help others.</li> <li>- Use the high 3 Strategy to solve problems.</li> <li>- Accept changes in routine.</li> </ul>	<ul style="list-style-type: none"> <li>- Show self control.</li> <li>- Ask for help if I need it and try to help others.</li> <li>- Use the high 3 Strategy to solve problems.</li> <li>- Accept changes in routine.</li> </ul>

## Focused Teaching

Approximately 15% of all students in any school or classroom may require additional support to meet behaviour expectations, even after being provided with differentiated and explicit teaching. These students may have difficulty meeting behavioural expectations in a particular period of the day or as part of a learning area/subject, and focused teaching is provided to help them achieve success.

Focused teaching involves revisiting key behavioural concepts and/or skills and using explicit and structured teaching strategies in particular aspects of a behaviour skill. Focused teaching provides students with more

opportunities to practise skills and multiple opportunities to achieve the intended learning and expected behaviour.

Support staff, including teachers with specialist expertise in learning, language or development, work collaboratively with class teachers at Mount Cotton State School to provide focused teaching. Focused teaching is aligned to the Behavioural Expectations Matrix, and student progress is monitored by the classroom teacher/s to identify those who:

- no longer require the additional support
- require ongoing focussed teaching
- require intensive teaching.

Mount Cotton State School has a range of Student Support Network staff in place to help arrange and deliver focused teaching to students who need more support to meet expectations. In addition, the school invests in the following evidence-informed programs/strategies to address specific skill development for some students:

- Zones of Regulation
- Functional Based Assessment.

For more information about these programs, please speak with a member of the Leadership Team.

## Intensive Teaching

Research evidence shows that even in an effective, well-functioning school there will always be approximately 5% of the student population who require intensive teaching to achieve behavioural expectations. Intensive teaching involves frequent and explicit instruction, with individuals or in small groups, to develop mastery of basic behavioural concepts, skills and knowledge.

Some students may require intensive teaching for a short period, for particular behaviour skills. Other students may require intensive teaching for a more prolonged period. Decisions about the approach will be made based on data collected from their teacher or teachers, and following consultation with the student's family.

For a small number of students who continue to display behaviours that are deemed complex and challenging, then individualised, function-based behaviour assessment and support plans and multi-agency collaboration may be provided to support the student. This approach will seek to address the acute impact of barriers to learning and participation faced by students who are negotiating a number of complex personal issues.

Students who require intensive teaching will be assigned an individual mentor at the school that will oversee the coordination of their program, communicate with stakeholders and directly consult with the student.

# Legislative Delegations

## Legislation

In this section of the Mount Cotton State School Student Code of Conduct are links to legislation which influences form and content of Queensland state school discipline procedures.

- [Anti-Discrimination Act 1991 \(Qld\)](#)
- [Child Protection Act 1999 \(Qld\)](#)
- [Commonwealth Disability Discrimination Act 1992](#)
- [Commonwealth Disability Standards for Education 2005](#)
- [Criminal Code Act 1899 \(Qld\)](#)
- [Education \(General Provisions\) Act 2006](#)
- [Education \(General Provisions\) Regulation 2017](#)
- [Human Rights Act 2019 \(Qld\)](#)
- [Information Privacy Act 2009 \(Qld\)](#)
- [Judicial Review Act 1991 \(Qld\)](#)
- [Right to Information Act 2009 \(Qld\)](#)
- [Police Powers and Responsibilities Act 2000 \(Qld\)](#)
- [Workplace Health and Safety Act 2011 \(Qld\)](#)
- [Workplace Health and Safety Regulation 2011 \(Cwth\)](#)

## Delegations

Under the Education (General Provisions) Act 2006, state school principals are responsible for “controlling and regulating student discipline in the school”.

Principals are afforded a number of **non-delegable powers** to assist them to meet this obligation, including the authority to suspend, exclude or cancel the enrolment of a student at the school. These decision-making responsibilities cannot be delegated to other staff in the school, such as deputy principals.

The details of these responsibilities are outlined in the legislative instruments of delegation and instruments of authorisation provided below:

- [Education \(General Provisions\) Act 2006 Director-General's delegations](#)
- [Education \(General Provisions\) Act 2006 Minister's delegations](#)
- [Education \(General Provisions\) Act 2006 Director-General's authorisations](#)
- [Education \(General Provisions\) Regulation 2006 Minister's delegations](#)
- [Education \(General Provisions\) Regulation 2017 Director-General's delegations](#)

## Disciplinary Consequences

The disciplinary consequences model used at Mount Cotton State School follows the same differentiated approach used in the proactive teaching and support of student behavioural expectations.

The majority of students will be confident and capable of meeting established expectations that are clear, explicitly taught and practised. In-class corrective feedback, sanctions and rule reminders may be used by teachers to respond to low-level or minor problem behaviours.

Some students will need additional support, time and opportunities to practise expected behaviours. Approximately 15% of the student population may experience difficulty with meeting the stated expectations, and even with focussed teaching, in-class corrective feedback, sanctions and rule reminders continue to display low-level problem behaviour. A continued pattern of low-level behaviour can interfere with teaching and learning for the whole class, and a decision may be needed by the class teacher to refer the student to the school administration team immediately for determination of a disciplinary consequence.

For a small number of students, approximately 2-5%, a high level of differentiated support or intensive teaching is required to enable them to meet the behavioural expectations. This may be needed throughout the school year on a continuous basis. The determination of the need will be made by the principal in consultation with staff and other relevant stakeholders. On occasion the behaviour of a student may be so serious, such as causing harm to other students or to staff, that the principal may determine that an out of school suspension or exclusion is necessary as a consequence for the student's behaviour. Usually this course of action is only taken when the behaviour is either so serious as to warrant immediate removal of the student for the safety of others, and no other alternative discipline strategy is considered sufficient to deal with the problem behaviour.

The differentiated responses to problem behaviour can be organised into three tiers, with increasing intensity of support and consequences to address behaviour that endangers others or causes major, ongoing interference with class or school operations.

### Differentiated

Class teacher provides in-class or in-school disciplinary responses to low-level or minor problem behaviour. This may include:

- Pre-correction (e.g. "Remember, walk quietly to your seat")
- Non-verbal and visual cues (e.g. posters, hand gestures)
- Whole class practising of routines
- Ratio of 5 positive to 1 negative commentary or feedback to class
- Corrective feedback (e.g. "Hand up when you want to ask a question")
- Rule reminders (e.g. "When the bell goes, stay seated until I dismiss you")
- Explicit behavioural instructions (e.g. "Pick up your pencil")

- Proximity control
- Tactical ignoring of inappropriate behaviour
- Revised seating plan and relocation of student/s
- Individual positive reinforcement for appropriate behaviour
- Classwide incentives
- Reminders of incentives or class goals
- Redirection
- Low voice and tone for individual instructions
- Give 30 second 'take-up' time for student/s to process instruction/s
- Reduce verbal language
- Break down tasks into smaller chunks
- Provide positive choice of task order (e.g. "Which one do you want to start with?")
- Prompt student to take a break or time away in class
- Model appropriate language, problem solving and verbalise thinking process (e.g. "I'm not sure what is the next step, who can help me?")
- Provide demonstration of expected behaviour
- Peer consequence/Peer praise (e.g. corrective feedback to influential peer demonstrating same problem behaviour)
- Private discussion with student about expected behaviour
- Reprimand for inappropriate behaviour
- Time out in the classroom
- Warning of more serious consequences (e.g. removal from classroom - Buddy Class)

## **Focussed**

Class teacher is supported by other school-based staff to address in-class problem behaviour. This may include:

- LET (Learning Enhancement Team) referral
- Basic/Light Functional Behaviour Assessment
- Individual student behaviour support strategies (e.g. student behaviour plan)
- Targeted skills teaching in small group
- Token economy
- Detention
- Buddy Class
- Behavioural contract
- Counselling and guidance support
- Self-monitoring plan
- Check in Check Out strategy
- Zones of Regulation tracking chart
- Fitbit
- Teacher coaching and debriefing
- Referral to Student Support Network for team based problem solving
- Stakeholder meeting with parents and external agencies

## **Intensive**

School leadership team work in consultation with Student Support Network to address persistent or ongoing serious problem behaviour. This may include:

- Functional Behaviour Assessment based individual support plan
- Complex case management and review
- Stakeholder meeting with parents and external agencies including regional specialists
- Temporary removal of student property (e.g. mobile phone)
- Short term suspension (up to 10 school days)
- Long term suspension (up to 20 school days)
- Charge related suspension (student has been charged with a serious criminal offence is suspended from school until the charge has been dealt with by the relevant justice authorities)
- Suspension pending exclusion (student is suspended from school pending a decision by the Director-General or delegate (principal) about their exclusion from school)
- Exclusion (student is excluded from a particular state school site, a group of state schools or all state schools in Queensland for a defined period of time or permanently)
- Cancellation of enrolment for students older than compulsory school age who refuse to participate in the educational program provided at the school.

## School Disciplinary Absences

A School Disciplinary Absence (SDA) is an enforced period of absence from attending a Queensland state school, applied by the Principal as a consequence to address poor student behaviour. There are four types of SDA:

- Short suspension (1 to 10 school days)
- Long suspension (11 to 20 school days)
- Charge-related suspension
- Exclusion (period of not more than one year or permanently).

At Mount Cotton State School, the use of any SDA is considered a very serious decision. It is typically only used by the Principal when other options have been exhausted or the student's behaviour is so dangerous that continued attendance at the school is considered a risk to the safety or wellbeing of the school community.

Parents and students may appeal a long suspension, charge-related suspension or exclusion decision. A review will be conducted by the Director-General or their delegate, and a decision made within 40 school days to confirm, amend/vary or set aside the original SDA decision by the Principal.

The appeal process is a thorough review of all documentation associated with the SDA decision and provides an opportunity for both the school and the family to present their case in the matter. Time is afforded for collection, dissemination and response to the materials by both the school and the family. It is important that the purpose of the appeal is understood so that expectations are clear, and appropriate supports are in place to ensure students can continue to access their education while completing their SDA.

### **Re-entry following suspension**

Students who are suspended from Mount Cotton State School will be invited to attend a re-entry meeting on the day of their scheduled return to school.

The main purpose of this meeting is to welcome the student, with their parent/s, back to the school. It is **not a time** to review the student's behaviour or the decision to suspend, the student has already received a consequence through their disciplinary absence from school. The aim of the re-entry meeting is for school staff to set the student up for future success and strengthen home-school communication.

It is not mandatory for the student or their parents to attend a re-entry meeting. It may be offered as a support for the student to assist in their successful re-engagement in school following suspension.

### **Arrangements**

The invitation to attend the re-entry meeting will be communicated via telephone, in writing, usually via email. Re-entry meetings are short, taking less than 10 minutes, and kept small with only the Principal or their delegate attending with the student and their parent/s.

A record of the meeting is saved in OneSchool, under the Contact tab, including any notes or discussions occurring during the meeting.

### **Structure**

The structure of the re-meeting should follow a set agenda, shared in advance with the student and their family. If additional items are raised for discussion, a separate arrangement should be made to meet with the parent/s at a later date and time. This meeting should be narrowly focussed on making the student and their family feel welcomed back into the school community.

Possible agenda:

- Welcome back to school
- Check in on student wellbeing
- Discuss any recent changes to school routine or staffing
- Offer information about supports available (e.g. Guidance Officer)
- Check In Check Out Plan
- Set a date for follow-up
- Thank student and parent/s for attending
- Walk with student to classroom

### **Reasonable adjustments**

In planning the re-entry meeting, school staff will consider reasonable adjustments needed to support the attendance and engagement of the student. This includes selecting an appropriate and accessible meeting space, organising translation or interpretation services or supports (e.g. AUSLAN), provision of written and/or pictorial information and other relevant accommodations. The inclusion of support staff, such as guidance officers or Community Education Counsellors, may also offer important advice to ensure a successful outcome to the re-entry meeting.

## School Policies

Mount Cotton State School has tailored school discipline policies designed to ensure students, staff and visitors work co-operatively to create and maintain a supportive and safe learning environment. Please ensure that you familiarise yourself with the responsibilities for students, staff and visitors outlined in the following policies:

- Temporary removal of student property
- Use of mobile phones and other devices by students
- Preventing and responding to bullying
- Appropriate use of social media

### Temporary removal of student property

The removal of any property in a student's possession may be necessary to promote the caring, safe and supportive learning environment of the school, to maintain and foster mutual respect between all state school staff and students. The **Temporary removal of student property by school staff procedure** outlines the processes, conditions and responsibilities for state school principals and school staff when temporarily removing student property.

In determining what constitutes a reasonable time to retain student property, the Principal or state school staff will consider:

- the condition, nature or value of the property
- the circumstances in which the property was removed
- the safety of the student from whom the property was removed, other students or staff members
- good management, administration and control of the school.

The Principal or state school staff determine when the temporarily removed student property can be returned, unless the property has been handed to the Queensland Police Service.

The following items are explicitly prohibited at Mount Cotton State School and will be removed if found in a student's possession:

- illegal items or weapons (e.g. guns, knives\*, throwing stars, brass knuckles, chains)
- imitation guns or weapons
- potentially dangerous items (e.g. blades, rope)
- drugs\*\* (including tobacco)
- alcohol
- aerosol deodorants or cans (including spray paint)
- explosives (e.g. fireworks, flares, sparklers)
- flammable solids or liquids (e.g. fire starters, mothballs, lighters)
- poisons (e.g. weed killer, insecticides)
- inappropriate or offensive material (e.g. racist literature, pornography, extremist propaganda).

\* No knives of any type are allowed at school, including flick knives, ballistic knives, sheath knives, push daggers, trench knives, butterfly knives, star knives, butter knives, fruit knives or craft knives, or any item that can be used as a weapon, for example a chisel. Knives needed for school activities will be provided by the school, and the use of them will be supervised by school staff. In circumstances where students are required to have their own knives or sharp tools for particular subjects or vocational courses, the school will provide information about the procedures for carrying and storing these items at school.

\*\* The administration of medications to students by school staff is only considered when a prescribing health practitioner has determined that it is necessary or when there is no other alternative in relation to the treatment of a specific health need. Schools require medical authorisation to administer any medication to students (**including over-the-counter medications such as paracetamol or alternative medicines**).

## Responsibilities

### Mount Cotton State school staff:

- do not require the student's consent to search school property such as lockers, desks or laptops that are supplied to the student through the school;
- may seize a student's bag where there is suspicion that the student has a dangerous item (for example, a knife) in their school bag, prior to seeking consent to search from a parent or calling the police;
- consent from the student or parent is required to examine or otherwise deal with the temporarily removed student property. For example, staff who temporarily remove a mobile phone from a student are not authorised to unlock the phone or to read, copy or delete messages stored on the phone;
- there may, however, be emergency circumstances where it is necessary to search a student's property without the student's consent or the consent of the student's parents (e.g. to access an EpiPen for an anaphylactic emergency);
- consent from the student or parent is required to search the person of a student (e.g. pockets or shoes). If consent is not provided and a search is considered necessary, the police and the student's parents should be called to make such a determination.

### Parents of students at Mount Cotton State School

- ensure your children do not bring property onto schools grounds or other settings used by the school (e.g. camp, sporting venues) that:
  - is prohibited according to the Mount Cotton State School Student Code of Conduct
  - is illegal
  - puts the safety or wellbeing of others at risk
  - does not preserve a caring, safe, supportive or productive learning environment
  - does not maintain and foster mutual respect;
- collect temporarily removed student property as soon as possible after they have been notified by the Principal or state school staff that the property is available for collection.

### Students of Mount Cotton State School

- do not bring property onto school grounds or other settings used by the school (e.g. camp, sporting venues) that:
  - is prohibited according to the Mount Cotton State School Code of Conduct
  - is illegal
  - puts the safety or wellbeing of others at risk
  - does not preserve a caring, safe, supportive or productive learning environment
  - does not maintain and foster mutual respect;
- collect their property as soon as possible when advised by the Principal or state school staff it is available for collection.

## Use of mobile phones and other devices by students

Digital literacy refers to the skills needed to live, learn and work in a society where communication and access to information is dominated by digital technologies like mobile phones and iPads. However, the benefits brought about through these diverse technologies can be easily overshadowed by deliberate misuse which harms others or disrupts learning.

In consultation with the broader school community, Mount Cotton State School has determined that explicit teaching of responsible use of iPads and other devices is a critical component of digital literacy. The knowledge and confidence to navigate and use these technologies safely while developing digital literacy is a responsibility shared between parents, school staff and students.

It is also agreed that time and space should be provided at school where technology is not permitted, and students are encouraged to engage in other social learning and development activities.

### Responsibilities

The responsibilities for students using mobile phones or other devices at school or during school activities, are outlined below.

It is **acceptable** for students at Mount Cotton State School to:

- switch off and place the mobile device in the school office when arriving at school in the morning and pick it up at the end of the school day
- seek teacher's approval where they wish to use a mobile device under special circumstances
- be courteous, considerate and respectful of others when using a mobile device.

It is **unacceptable** for students at Mount Cotton State School to:

- use a mobile phone or other devices in an unlawful manner
- use a mobile phone during the school day
- download, distribute or publish offensive messages or pictures
- use obscene, inflammatory, racist, discriminatory or derogatory language
- use language and/or threats of violence that may amount to bullying and/or harassment, or even stalking
- insult, harass or attack others or use obscene or abusive language

- deliberately waste printing and internet resources
- damage computers, printers or network equipment
- commit plagiarism or violate copyright laws
- ignore teacher directions for the use of social media, online email and internet chat
- send chain letters or spam email (junk mail)
- knowingly download viruses or any other programs capable of breaching the department's network security
- use in-phone cameras anywhere a normal camera would be considered inappropriate, such as in change rooms or toilets
- invade someone's privacy by recording personal conversations or daily activities and/or the further distribution (e.g. forwarding, texting, uploading, Bluetooth use etc.) of such material
- use a mobile phone (including those with Bluetooth functionality) to cheat during exams or assessments.

At all times students, while using ICT facilities and devices supplied by the school, will be required to act in line with the requirements of the Mount Cotton State School Student Code of Conduct. In addition students and their parents should:

- understand the responsibility and behaviour requirements (as outlined by the school) that come with accessing the department's ICT network facilities
- ensure they have the skills to report and discontinue access to harmful information if presented via the internet or email
- be aware that:
  - access to ICT facilities and devices provides valuable learning experiences for students and supports the school's teaching and learning programs
  - the school is not responsible for safeguarding information stored by students on departmentally-owned student computers or mobile devices
  - schools may remotely access departmentally-owned student computers or mobile devices for management purposes
  - students who use a school's ICT facilities and devices in a manner that is not appropriate may be subject to disciplinary action by the school, which could include restricting network access
  - despite internal departmental controls to manage content on the internet, illegal, dangerous or offensive information may be accessed or accidentally displayed
  - teachers will always exercise their duty of care, but avoiding or reducing access to harmful information also requires responsible use by the student.

## Preventing and responding to bullying

Mount Cotton State School uses the [Australian Student Wellbeing Framework](#) to promote positive relationships and the wellbeing of all students, staff and visitors at the school.

Our staff know student learning is optimised when they feel connected to others and experience safe and trusting relationships. Students who feel secure are more likely to be active participants in their learning and to

achieve better physical, emotional, social and educational outcomes. Teachers who feel valued and supported are more likely to engage positively with students and build stronger connections within the school community. Parents who are positively engaged with their child's education leads to improved student self-esteem, attendance and behaviour at school. Enhancing the wellbeing of students and their educators delivers overall long-term social, health and economic benefits to the Australian community.

Mount Cotton State School has a **Student Council**, with diverse representatives from each year level meeting regularly to promote strategies to improve student wellbeing, safety and learning outcomes. The standing items on the agenda for each Student Leadership Forum are the core elements of the Australian Student Wellbeing Framework:



### 1. Leadership

Principals and school leaders playing an active role in building a positive learning environment where the whole school community feels included, connected, safe and respected.

### 2. Inclusion

All members of the school community actively participating in building a welcoming school culture that values diversity, and fosters positive, respectful relationships.

### 3. Student voice

Students actively participate in their own learning and wellbeing, feel connected and use their social and emotional skills to be respectful, resilient and safe.

### 4. Partnerships

Families and communities collaborating as partners with the school to support student learning, safety and wellbeing.

### 5. Support

School staff, students and families sharing and cultivating an understanding of wellbeing and positive behaviour and how this supports effective teaching and learning.

A priority for the Student Council is contributing to the implementation of strategies that enhance wellbeing, promote safety and counter violence, bullying and abuse in all online and physical spaces. The engagement of young people in the design of technology information and digital education programs for parents was a key recommendation from the [Queensland Anti-Cyberbullying Taskforce report](#) in 2018. At Mount Cotton State School we believe students should be at the forefront of advising staff, parents and the broader community about emerging issues and practical solutions suitable to different contexts.

## **Bullying**

The agreed national definition for Australian schools describes bullying as

- ongoing and deliberate misuse of power in relationships through repeated verbal, physical and/or social behaviour that intends to cause physical, social and/or psychological harm;
- involving an individual or a group misusing their power, or perceived power, over one or more persons who feel unable to stop it from happening;
- happening in person or online, via various digital platforms and devices and it can be obvious (overt) or hidden (covert). Bullying behaviour is repeated, or has the potential to be repeated, over time (for example, through sharing of digital records);
- having immediate, medium and long-term effects on those involved, including bystanders.
- Single incidents and conflict or fights between equals, whether in person or online, are not defined as bullying.

Behaviours that do not constitute bullying include:

- mutual arguments and disagreements (where there is no power imbalance)
- not liking someone or a single act of social rejection
- one-off acts of meanness or spite
- isolated incidents of aggression, intimidation or violence.

However, these conflicts are still considered serious and need to be addressed and resolved. At Mount Cotton State School our staff will work to quickly respond to any matters raised of this nature in collaboration with students and parents.

The following flowchart explains the actions Mount Cotton State School staff will take when they receive a report about student bullying, including bullying which may have occurred online or outside of the school setting. Please note that the indicative timeframes will vary depending on the professional judgment of teachers who receive the bullying complaint and their assessment of immediate risk to student/s.

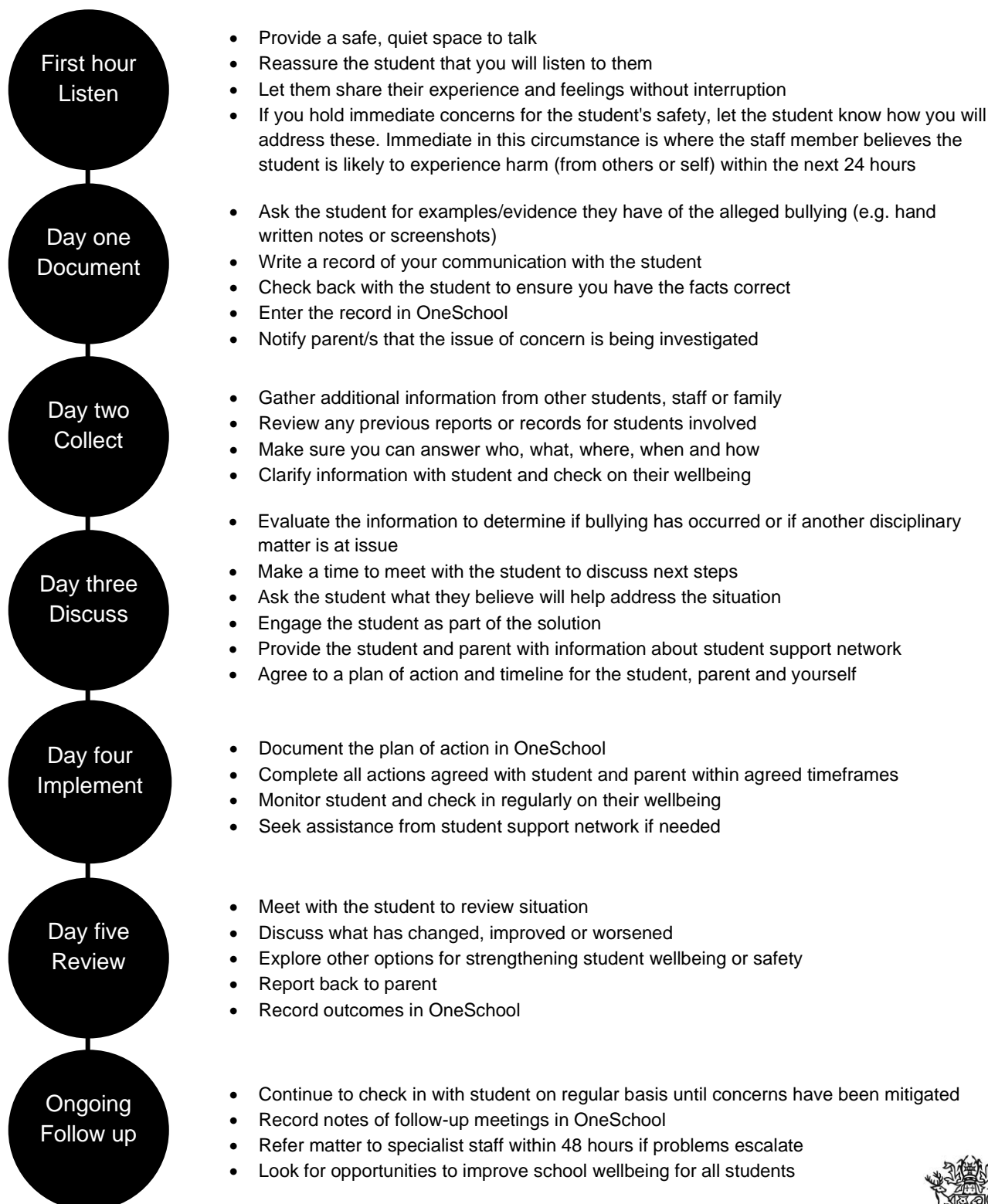
## Mount Cotton State School - Bullying response flowchart for teachers

Please note these timelines may be adjusted depending on the unique circumstances and risk associated with each situation. This is at the professional judgment of the staff involved. Timeframes should be clearly discussed and agreed with student and family.

### Key contacts for students and parents to report bullying:

Class teacher

Member of the Leadership Team



## Cyberbullying

Cyberbullying is treated at Mount Cotton State School with the same level of seriousness as in-person bullying. The major difference with cyberbullying however, is that unlike in-person bullying, cyberbullying follows students into their community, their homes and their bedrooms, giving them no opportunity to escape the harassment or abuse during the evening, weekends or holidays.

In the first instance, students or parents who wish to make a report about cyberbullying should approach the regular class teacher. Any member of the leadership team can provide assistance in preventing and responding to cyberbullying.

It is important for students, parents and staff to know that state school principals have the authority to take disciplinary action to address student behaviours that occur outside of school hours or school grounds (including before school). This includes cyberbullying. Parents and students who have concerns about cyberbullying incidents occurring during school holidays should immediately seek assistance through the [Office of the e-Safety Commissioner](#) or the Queensland Police Service.

Students enrolled at Mount Cotton State School may face in-school disciplinary action, such as detention or removing of privileges, or more serious consequences such as suspension or exclusion from school for engaging in behaviour that adversely affects, or is likely to adversely affect, other students or the good order and management of the school. This includes behaviour such as cyberbullying which occurs outside of school hours or settings, for example on the weekend or during school holidays. It also applies to inappropriate online behaviour of enrolled students that is directed towards other community members or students from other school sites.

Parents or other stakeholders who engage in inappropriate online behaviour towards students, staff or other parents may be referred to the Office of the e-Safety Commissioner and/or the Queensland Police Service. State school staff will be referred for investigation to the Integrity and Employee Relations team in the Department of Education. Any questions or concerns about the school process for managing or responding to cyberbullying should be directed to a member of the Leadership Team.

# Mount Cotton State School - Cyberbullying response flowchart for school staff

## How to manage online incidents that impact your school

### Student protection

If at any point the principal forms a reasonable suspicion that a student has been harmed or is at risk of harm, they have a responsibility to respond in accordance with the [Student protection procedure](#).

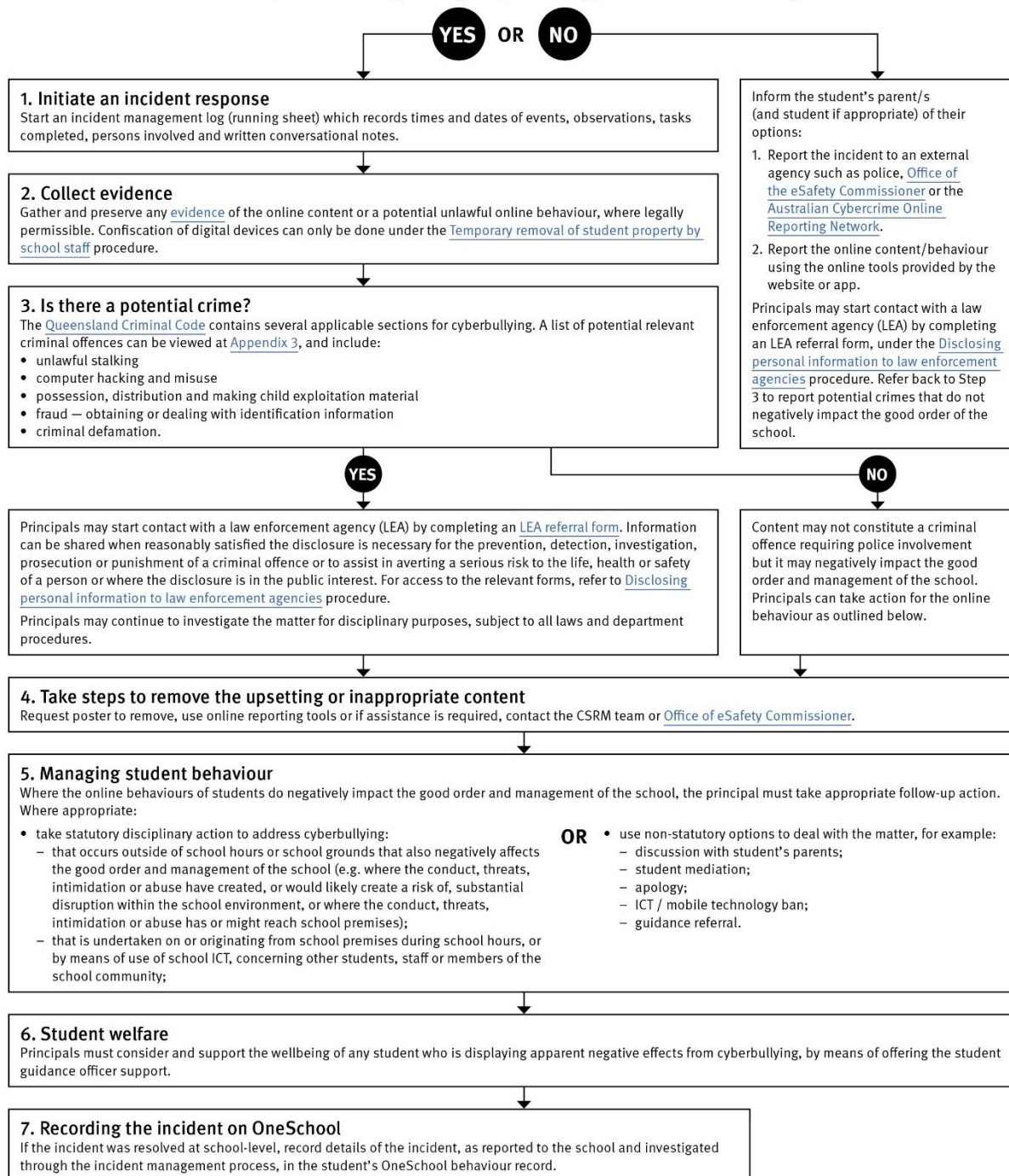
### Explicit images

If the investigation involves naked or explicit images of children, staff should not save, copy, forward or otherwise deal with the content, as per the [Temporary removal of student property by school staff procedure](#). This includes onto OneSchool records. Refer to the investigative process outlined in 'Responding to incidents involving naked or explicit images of children' from the [Online Incident management guidelines](#).

### Report

Refer to the [Online incident management guidelines](#) for more details, or if assistance is required, contact the Cybersecurity and Reputation Management (CSRM) team on 3034 5035 or [Cybersafety.ReputationManagement@qed.qld.gov.au](mailto:Cybersafety.ReputationManagement@qed.qld.gov.au).

Does the online behaviour/incident negatively impact the good order and management of the school?



## Cybersafety and Reputation Management (CRM)

The Department of Education employs a dedicated team of experts to assist in maintaining the integrity of the department's reputation with regards to cybersafety and reputation management issues, effectively leading the development and implementation of departmental cybersafety processes.

This team provides **direct support for schools** to respond to concerns of inappropriate online behaviour and misuse of information and communication technology.

The team provides a [guide for parents](#) with important information about cybersafety and cyberbullying, and suggestions about what you can do if your child is a target or responsible for inappropriate online behaviour.

The team has also developed a [Cyberbullying and reputation management](#) (Department employees only) resource to assist principals in incident management.

For more information about cybersafety sessions at your school, or for assistance with issues relating to online behaviour, contact the [team](#) (Department employees only).

### Student Intervention and Support Services

Mount Cotton State School recognises the need to provide intervention and support to all students involved in incidents of bullying, including cyberbullying.

Students who have been subject or witness to bullying have access to a range of internal support staff, as identified in the Student Support Network section earlier in this document. Students are, however, also encouraged to approach any staff member with whom they feel comfortable sharing their concerns, regardless of their role in the school. All staff at Mount Cotton State School are familiar with the response expectations to reports of bullying, and will act quickly to ensure students' concerns are addressed. Depending on the nature of the reported bullying incident, a formal plan of action may be developed and documented to support the implementation of strategies to assist the student.

Students who engage in bullying behaviours towards others will also be provided with support to assist them to use more socially acceptable and appropriate behaviours in their interactions. This includes counselling, social development programs, referral to mental health services or involvement in a restorative justice strategy. School disciplinary measures may also be used to reinforce the seriousness with which the community takes all incidents of bullying. These measures may include internal school suspension, withdrawal from social events or celebrations or more severe punishments such as suspension or exclusion from school.

## **Mount Cotton State School – Anti-Bullying Compact**

The Anti-Bullying Compact provides a clear outline of the way our community at Mount Cotton State School works together to establish a safe, supportive and disciplined school environment. This compact is provided to all students and their parents upon enrolment, and may be revisited with individual students if particular problems around bullying arise.

### **Mount Cotton State School – Anti Bullying Compact**

We agree to work together to improve the quality of relationships in our community at Mount Cotton State School. It is through intentional consideration of our behaviour and communication that we can reduce the occurrence of bullying, and improve the quality of the schooling experience for everyone.

The agreed national definition for Australian schools describes bullying as

- ongoing and deliberate misuse of power in relationships through repeated verbal, physical and/or social behaviour that intends to cause physical, social and/or psychological harm;
- involving an individual or a group misusing their power, or perceived power, over one or more persons who feel unable to stop it from happening;
- happening in person or online, via various digital platforms and devices and it can be obvious (overt) or hidden (covert). Bullying behaviour is repeated, or has the potential to be repeated, over time (for example, through sharing of digital records);
- having immediate, medium and long-term effects on those involved, including bystanders. Single incidents and conflict or fights between equals, whether in person or online, are not defined as bullying.

We believe that no one deserves to be mistreated and that everyone regardless of race, colour, religion, sexuality/sexual orientation, immigration status, nationality, size, gender, popularity, athletic capability, academic outcomes, social ability, or intelligence has the right to feel safe, secure, and respected.

I agree to:

- Treat everyone with kindness and respect.
- Abide by the school's anti-bullying policies and procedures.
- Support individuals who have been bullied.
- Speak out against verbal, relational, physical bullying and cyber bullying.
- Notify a parent, teacher, or school administrator when bullying does occur.

Student's signature

Parent's signature

School representative signature

Date



## Appropriate use of social media

The internet, mobile phones and social media provide wonderful opportunities for students to network and socialise online. While these technologies provide positive platforms for sharing ideas, they also have the potential to cause pain and suffering to individuals, groups or even whole communities.

It's important to remember that sometimes negative comments posted about the school community have a greater impact than expected. This guide offers some information about how to use social media in relation to comments or posts about the school community. Reputations of students, teachers, schools, principals and even parents can be permanently damaged — and in some cases, serious instances of inappropriate online behaviour are dealt with by police and the court system.

Being aware of a few simple strategies can help keep the use of social media positive and constructive:

- Before you post something online, ask yourself if the community or individual really need to know. Is it relevant, positive and helpful?
- Remember that what you post online is a direct reflection of who you are. People will potentially form lasting opinions of you based on what you post online.
- Be a good role model. If things get heated online consider logging out and taking a few moments to relax and think. Hasty, emotive responses could inflame situations unnecessarily.
- Be mindful when commenting, try to keep general and avoid posting anything that could identify individuals.
- A few years ago parents may have discussed concerns or issues with their friends at the school gate. Today with the use of social media, online discussions between you and your close friends can very quickly be shared with a much wider audience, potentially far larger than intended.
- Taking a few moments to think about the content you are about to post could save upset, embarrassment, and possible legal action.
- As a parent you have a role in supervising and regulating your child's online activities at home and its impact on the reputation and privacy of others. Parents are their child's first teachers — so they will learn online behaviours from you.

### **Is it appropriate to comment or post about schools, staff or students?**

Parental and community feedback is important for schools and the department. If you have a compliment, complaint or enquiry about an issue at school, the best approach is to speak directly to the school about the matter, rather than discussing it in a public forum.

While many schools use social media to update parents of school notices, the department prefers that parents contact schools directly with a compliment, complaint or enquiry due to privacy considerations. Imagine if your doctor, accountant or banking institution tried to contact you to discuss important matters via Facebook.

If you have raised an issue with a school or know that another person has, consider refraining from discussing those details on social media, particularly the names of anyone involved.

Keep comments calm and polite, just as you would over the telephone or by email. If you encounter negative or derogatory content online which involves the school, hinders a child's learning and/or affects the school community at large, contact the school principal.

### **Possible civil or criminal ramifications of online commentary**

A serious instance of inappropriate online behaviour may constitute a criminal offence and become a police matter. For example, online content may substantiate the offence of 'using a carriage service to menace, harass or cause offence' (Criminal Code Act 1995 (Cth) s. 474.17). School staff may contact their union or obtain personal legal advice if they feel that online content seriously impacts their reputation. Defamatory online content may give rise to litigation under the Defamation Act 2005 (Qld).

### **What about other people's privacy?**

If you upload photos of your children, be mindful of who might be in the background. You might be happy to share your child's successes with your friends and family via social media, but some parents are not. If you are tagging or naming students, consider that other parents may not want their child's name attached to images online.

### **What if I encounter problem content?**

Taking the following steps may help resolve the issue in a constructive way:

- refrain from responding
- take a screen capture or print a copy of the concerning online content
- if you consider problem content to be explicit, pornographic or exploitative of minors, you should keep a record of the URL of the page containing that content but NOT print or share it. The URL can be provided to the school principal, or police, as needed for escalation of serious concerns
- block the offending user
- report the content to the social media provider.

## Restrictive Practices

School staff at Mount Cotton State School need to respond to student behaviour that presents a risk of physical harm to the student themselves or others. It is anticipated that most instances of risky behaviour can be de-escalated and resolved quickly. On some rarer occasions, a student's behaviour may continue to escalate and staff need to engage immediately with positive and proactive strategies aimed at supporting the student to manage their emotional arousal and behaviour.

In some very rare situations, where there is immediate risk of physical harm to the student or other people, and when all other alternative strategies have failed to reduce the risk, it may be necessary for staff to use restrictive practices.

The use of restrictive practices will always be as a last resort, when there is no other available option for reducing immediate risk to the student, staff or other people. Restrictive practices are not used for punishment or as a disciplinary measure.

The department's **Restrictive practices procedure** is written with consideration for the protection of everyone's human rights, health, safety and welfare. There are six fundamental principles:

1. Regard to the human rights of those students
2. Safeguards students, staff and others from harm
3. Ensures transparency and accountability
4. Places importance on communication and consultation with parents and carers
5. Maximises the opportunity for positive outcomes, and
6. Aims to reduce or eliminate the use of restrictive practices.

Very rarely restrictive practices will be planned and staff will employ, when necessary, pre-arranged strategies and methods (of physical restraint/ mechanical restraint/ clinical holding) which are based upon behaviour risk assessment or clinical health need and are recorded in advance. The use of planned strategies will only be where there is foreseeable immediate risk consistent with the **Restrictive practices procedure**.

Seclusion will not be used as a planned response and will only be used in serious circumstances for managing an unforeseeable situation in an emergency. It will be used for the shortest time possible and in a safe area that presents no additional foreseeable risk to the student. In such emergencies, a staff member will observe the student at all times and seclusion will cease as soon as possible.

Following the use of any restrictive practice, a focused review will help staff to understand how they responded to the risk in any incident that involved the use of a restrictive practice. Staff will consider whether there are other options for managing a similar situation in the future. This strategy works well for reducing the use of restrictive practices.

All incidents of restrictive practices will be recorded and reported in line with departmental procedures.

## Critical Incidents

It is important that all school staff have a consistent understanding of how to respond in emergencies involving student behaviour that seriously endangers the student or others. This consistency ensures that appropriate actions are taken to ensure that both students and staff are kept safe.

A critical incident is defined as an occurrence that is sudden, urgent, and usually unexpected, or an occasion requiring immediate action (e.g. in the community, on the road). The aim in these situations is to bring the behaviour of the student under rapid and safe control. It is not a time to try and to punish or discipline the student; it is a crisis management period only.

Staff should follow the documented plan for any student involved in regular critical incidents, which should be saved and available for staff to review in OneSchool.

For unexpected critical incidents, staff should use basic defusing techniques:

1. Avoid escalating the problem behaviour: Avoid shouting, cornering the student, moving into the student's space, touching or grabbing the student, sudden responses, sarcasm, becoming defensive, communicating anger and frustration through body language.
2. Maintain calmness, respect and detachment: Model the behaviour you want students to adopt, stay calm and controlled, use a serious measured tone, choose your language carefully, avoid humiliating the student, be matter of fact and avoid responding emotionally.
3. Approach the student in a non-threatening manner: Move slowly and deliberately toward the problem situation, speak privately to the student/s where possible, speak calmly and respectfully, minimise body language, keep a reasonable distance, establish eye level position, be brief, stay with the agenda, acknowledge cooperation, withdraw if the situation escalates.
4. Follow through: If the student starts displaying the appropriate behaviour briefly acknowledge their choice and re-direct other students' attention towards their usual work/activity. If the student continues with the problem behaviour, then remind them of the expected school behaviour and identify consequences of continued unacceptable behaviour.
5. Debrief: At an appropriate time when there is low risk of re-escalation, help the student to identify the sequence of events that led to the unacceptable behaviour, pinpoint decision moments during the sequence of events, evaluate decisions made, and identify acceptable decision options for future situations.

## Related Procedures and Guidelines

These are related procedures or guidelines which school staff use to inform decisions and actions around matters associated with students wellbeing, behaviour and learning.

- Cancellation of enrolment
- Complex case management
- Customer complaints management policy and procedure
- Disclosing personal information to law enforcement agencies
- Enrolment in state primary, secondary and special schools
- Hostile people on school premises, wilful disturbance and trespass
- Inclusive education
- Police and Child Safety Officer interviews and searches with students
- Restrictive practices
- Refusal to enrol – Risk to safety or wellbeing
- Student discipline
- Student dress code
- Student protection
- Supporting students' mental health and wellbeing
- Temporary removal of student property by school staff
- Use of ICT systems
- Using mobile devices

## Resources

- [Australian Professional Standards for Teachers](#)
- [Behaviour Foundations professional development package](#) (school employees only)
- [Bullying. No Way!](#)
- [eheadspace](#)
- [Kids Helpline](#)
- [Office of the eSafety Commissioner](#)
- [Parent and community engagement framework](#)
- [Parentline](#)
- [Queensland Department of Education School Discipline](#)
- [Raising Children Network](#)
- [Student Wellbeing Hub](#)

## Conclusion

Mount Cotton State School staff are committed to ensuring every student is supported to feel safe, welcomed and valued in our school. There may, however, be occasions where parents need to raise a concern or make a complaint about an issue you feel is adversely affecting your child's education.

All Queensland state schools are committed to ensuring that all complaints - whether they relate to a school staff member or a school's operations - are dealt with in a fair and equitable manner. As a parent or carer, you can express dissatisfaction with the service or action of the Department of Education or its staff, including decisions made or actions taken in a school and/or by the local regional office.

As a complainant, it is your responsibility to:

- give us a clear idea of the issue or concern and your desired solution
- provide all the relevant information when making the complaint
- understand that addressing a complaint can take time
- cooperate respectfully and understand that unreasonable, abusive, or disrespectful conduct will not be tolerated
- let us know if something changes, including if help is no longer needed.

**The Department of Education may not proceed with your complaint if your conduct is unreasonable.**

In most instances, staff members are told of complaints made about them and offered the right of reply. A complainant also has the right to have a support person throughout the process.

The following three-step approach assists parents and school staff in reaching an outcome that is in the best interests of the student:

1. **Early resolution:** discuss your complaint with the school

The best place to raise any concerns is at the point where the problem or issue arose. You can make an appointment at the school to discuss your complaint with your child's teacher or the principal. You are also welcome to lodge your complaint in writing or over the phone. You can also make a complaint through [QGov](#).

Complaints may be lodged by telephone, writing or in electronic format. Email addresses can be accessed through the [schools directory](#).

2. **Internal review:** [contact the local Regional Office](#)


If, after taking the early resolution step, you are dissatisfied with the outcome of your complaint or how the complaint was handled, you can ask the local [regional office](#) to conduct a review. You need to submit a [Request for internal review form](#) within 28 days of receiving the complaint outcome.

- 3. External review:** contact a review authority  
if you are dissatisfied after the internal review, you may wish to contact a review authority, such as the Queensland Ombudsman, and request an independent, external review. More information about external review options is available at [www.ombudsman.qld.gov.au](http://www.ombudsman.qld.gov.au).

Some matters need to be handled in a different way to school matters and will be referred to other areas in the department. These include:

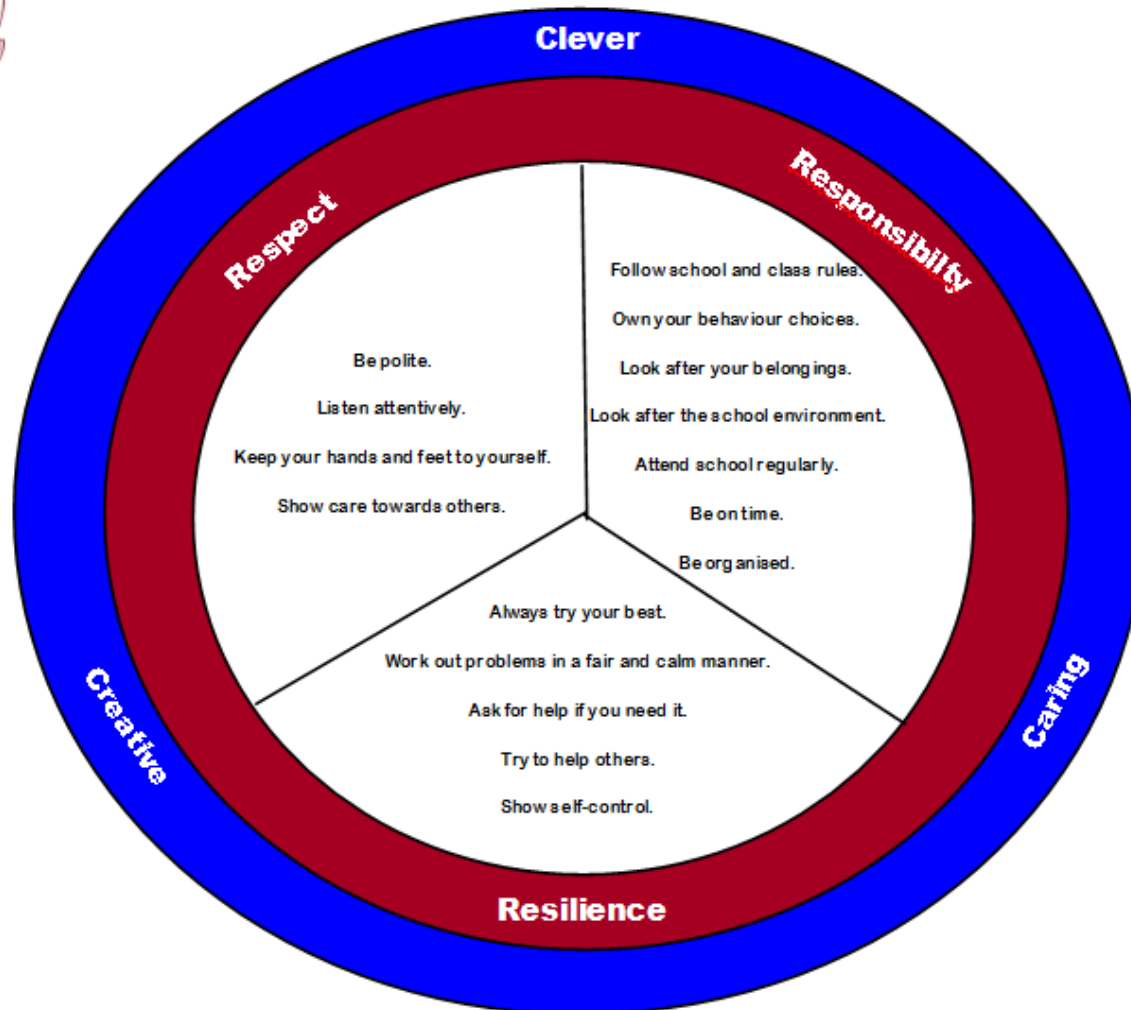
- issues about harm, or risk of harm, to a student attending a state school, which must be managed in accordance with the [Student protection procedure](#).
- complaints about corrupt conduct, public interest disclosures; or certain decisions made under legislation, which will be dealt with as outlined in the [Excluded complaints factsheet](#).

# Mount Cotton State School Behavioural Expectations matrix

	All Areas	Learning Spaces	Play Areas	Toilets	Transitions/ Around Classrooms	Assemblies	Before School	Bus/Pick up Zones
<b>I am Respectful when I:</b>	<p>Follow instructions right away.</p> <p>Use polite language and good manners.</p> <p>Wear my school uniform with pride.</p> <p>Care for the wildlife and natural features of our school.</p>	<p>Raise my hand to speak and actively listen to others.</p> <p>Politely ask permission to leave the classroom.</p> <p>Respect the rights of others to learn.</p> <p>Complete tasks neatly and efficiently.</p> <p>Use equipment for its intended purpose.</p>	<p>Return borrowed equipment properly.</p> <p>Play fairly</p> <p>Care for our environment.</p> <p>Follow instructions right away.</p> <p>Use equipment for its intended purpose.</p>	<p>Politely ask permission to leave the classroom.</p> <p>Keep the area clean for others.</p> <p>Respect the privacy of others.</p>	<p>Walk on pathways -not through gardens.</p> <p>Walk quietly so that classes may continue learning.</p> <p>Listen to teacher instructions before transitioning.</p>	<p>Use whole body listening.</p> <p>Follow instructions right away.</p> <p>Clap appropriately for speakers and award recipients.</p> <p>Remove my hat indoors.</p>	<p>Follow instructions right away.</p> <p>Keep waiting areas tidy.</p>	<p>Follow instructions right away.</p> <p>Wait in the appropriate waiting areas.</p>
<b>I am Responsible when I:</b>	<p>Look after the belongings of myself and others.</p> <p>Use the <i>High 5</i> strategy to solve conflict.</p> <p>Arrive at school on time every day.</p> <p>Ensure I am at the right place at the right time.</p> <p>Keep my hands and feet to myself.</p>	<p>Bring all of my equipment and arrive at my lessons on time and ready to learn.</p> <p>Actively listen to the teacher.</p> <p>Look after the belongings of myself and others.</p> <p>Enter and exit each room in an orderly manner.</p>	<p>Play in the right area for my year level.</p> <p>Put all rubbish in a bin.</p> <p>Line up quickly in the appropriate area.</p> <p>Wear shoes and a sun safe hat at all times.</p> <p>Report unsafe behaviour to the teacher on duty.</p>	<p>Use toilets during break times.</p> <p>Turn off taps.</p> <p>Report any problems to the office.</p> <p>Close doors carefully.</p> <p>Use toilets appropriately.</p> <p>Choose a sensible buddy to go to the toilets with during class time.</p>	<p>Pack up my own equipment before transitioning.</p> <p>Walk directly from one class to another.</p> <p>Line up quietly before entering a classroom.</p> <p>Walk to the left of the pathway.</p> <p>Carry my belongings carefully and correctly.</p>	<p>Pack up my own equipment in the hall.</p> <p>Face the speaker.</p> <p>Stand and sit quietly during assembly.</p> <p>Enter and exit the hall calmly. Walk when in the hall.</p> <p>Stay with my class.</p> <p>Keep my hands and feet to myself.</p>	<p>Sit quietly in appropriate waiting areas.</p> <p>Care for my own belongings. Take my iPad to the library.</p> <p>Cross roads using zebra crossings and when the green 'cross' man is showing at traffic lights.</p> <p>Stay inside the school grounds.</p>	<p>Move quickly and quietly to appropriate waiting areas.</p> <p>Have my bus pass ready.</p> <p>Look for my car at pick up zones.</p> <p>Use pedestrian crossings.</p> <p>Only leave the school grounds with a parent/carer or with a staff member to meet the bus.</p>
<b>I am Resilient when I:</b>	<p>Show self control.</p> <p>Ask for help if I need it and try to help others.</p>	<p>Show self-control.</p> <p>Ask for help if I need it and try to help others.</p> <p>Try my best and persevere.</p> <p>Work out problems in a fair and calm manner.</p> <p>Stay positive.</p> <p>Accept changes in routine.</p>	<p>Show self control.</p> <p>Ask for help if I need it and try to help others.</p> <p>Be a good sport and play by the rules.</p> <p>Use the <i>High 5 Strategy</i> to solve problems.</p> <p>Accept changes in routine.</p>	<p>Show self control.</p> <p>Ask for help if I need it and try to help others.</p>	<p>Show self control.</p> <p>Ask for help if I need it and try to help others.</p>	<p>Show self control.</p> <p>Ask for help if I need it and try to help others.</p> <p>Join with my class in their performances.</p>	<p>Show self control.</p> <p>Ask for help if I need it and try to help others.</p> <p>Use the <i>High 5 Strategy</i> to solve problems.</p> <p>Accept changes in routine.</p>	<p>Show self control.</p> <p>Ask for help if I need it and try to help others.</p> <p>Use the <i>High 5 Strategy</i> to solve problems.</p> <p>Accept changes in routine.</p>

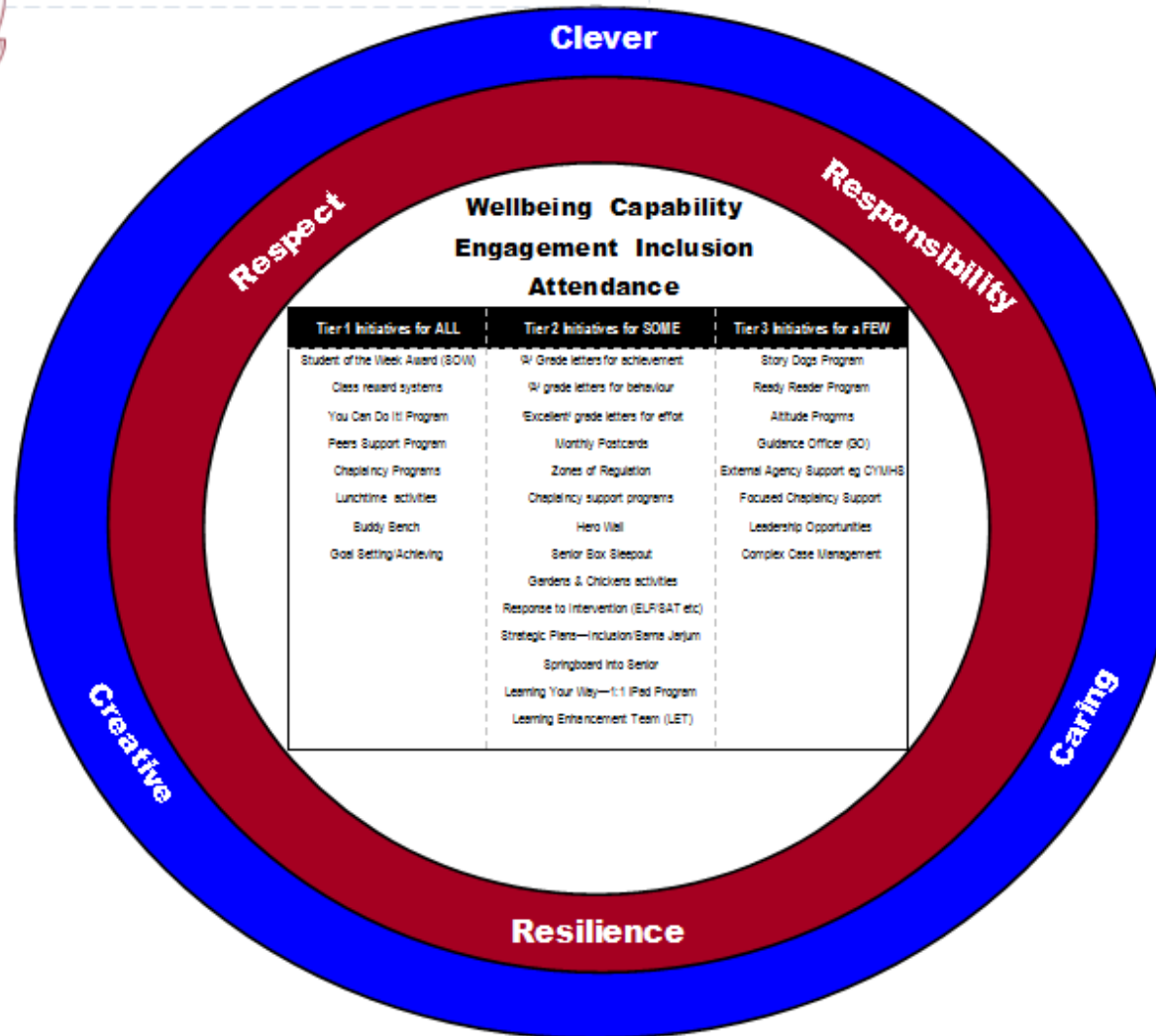


## Mount Cotton State School The 3 Cs and 3 Rs.





## Mount Cotton State School Student Wellbeing Framework



# Mount Cotton SS Step Chart

Step 1: 1st Warning



Step 2: 2nd Warning



Step 3: In class time out



Step 4: Time out  
in another class



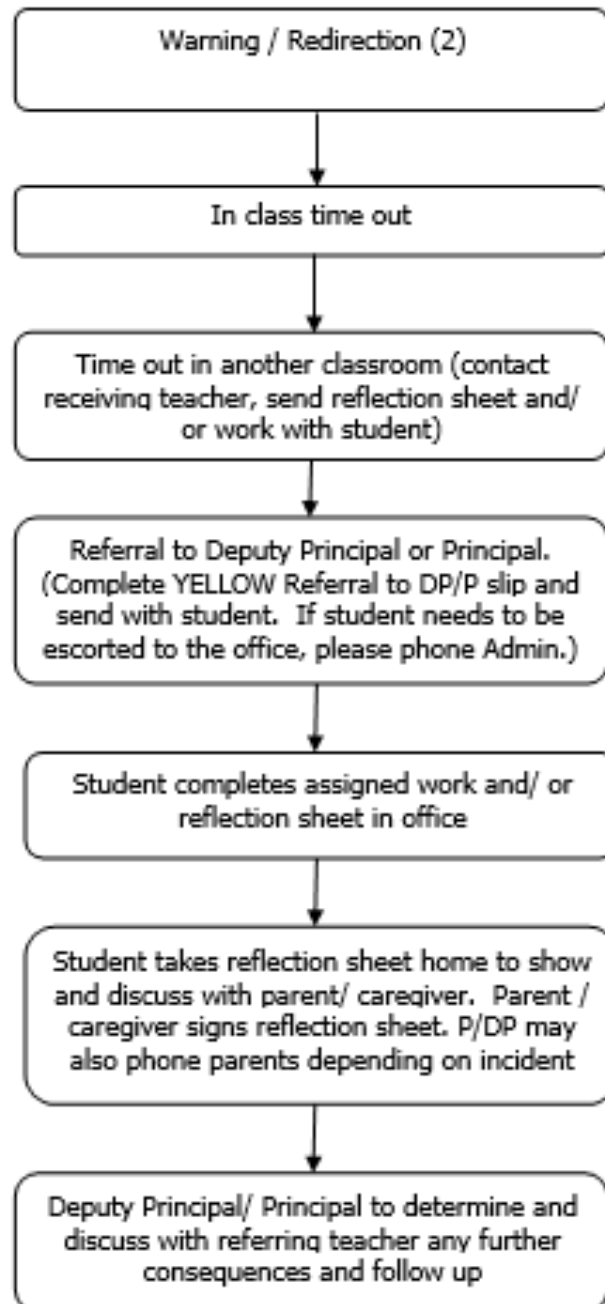
Step 5: Referral  
to the office





## MOUNT COTTON STATE SCHOOL In Class Behaviour Referral Process

The following outlines the process staff should follow in the case of in class inappropriate behaviour. Staff can refer students to the Deputy Principal / Principal for **serious or high frequency** inappropriate behaviour.





## REFERRAL TO TIME OUT IN ANOTHER CLASSROOM



Name \_\_\_\_\_ Date \_\_\_\_\_

Which school rule did I break? (circle)

RESPECT

RESPONSIBILITY

RESILIENCE

Why have I been sent to time out in another classroom? (Referring teacher to scribe)

What will I do when I go back to my class? (draw a picture)

Signed \_\_\_\_\_ (Class Teacher)

Signed \_\_\_\_\_ (Parent / Guardian)

**PLEASE RETURN TO CLASS TEACHER ON THE NEXT SCHOOL DAY**



## REFERRAL TO TIME OUT IN ANOTHER CLASSROOM



Name \_\_\_\_\_ Date \_\_\_\_\_

Which school rule did I break? (circle)

RESPECT

RESPONSIBILITY

RESILIENCE

Why have I been sent to time out in another classroom?

What should I have done?

What will I do when I return to my class?

Signed \_\_\_\_\_ (Class Teacher)

Signed \_\_\_\_\_ (Parent / Guardian)

PLEASE RETURN TO CLASS TEACHER ON THE NEXT SCHOOL DAY



# MOUNT COTTON STATE SCHOOL

Mount Cotton Road MOUNT COTTON Q 4165

Phone: (07) 3822 0444

Fax: (07) 3822 0400

Principal: Meagan Steward

Deputy Principal: Sally Bedford

Deputy Principal: Stacey Dabelstein

BSM: Peta Holmes

A.B.N. 59 722 689 623

## Student Participation Agreement (1:1 iPad Program 2020)

### General Use

1. I understand it is recommended that I **bring my personal iPad to school each day**.
2. I will ensure the **iPad is charged** at the beginning of each school day.
3. I will **leave the iPad charger at home**.
4. I will hold the **iPad with two hands** when carrying it and **will walk** with it at all times.
5. I will **ensure my iPad is kept in my school bag on my trip to/from school**.
6. I will **keep food and drinks away** from the iPad at school.
7. I will **immediately report any accidents or breakages** to my parents and teachers.
8. I will have **Bluetooth** switched on at all times.

### Content

1. I will use the iPad only to **support my school learning program** whilst at Mount Cotton State School.
2. I permit my teachers and parents to **perform checks** to monitor that I have not installed illegal / unsuitable software applications and content and to check the websites which I visit. I understand there will be **consequences** for inappropriate use including, but not limited to, loss of privilege of using the iPad for a period of time.
3. I am responsible to ensure my iPad is **backed up**.

### Safety and Security

1. Whilst at school, I will only connect my iPad to Education Queensland's Managed Internet Service. I am not permitted to access external internet providers at school.
2. Whilst at school, I will **only go to websites** that support my learning activities.
3. I will only use my school email account for mail related to my learning.
4. I will be **cyber safe** and **cyber smart** when using the internet.
5. I will demonstrate **etiquette** when using my iPad / other equipment.
6. I will only take photos, on my iPad, when instructed by my teacher.
7. I will use my iPad lawfully and in accordance with the *Appropriate Use/Behaviour of School Network* guidelines regarding **ethical use** of equipment, technology, use of legal software, use of the internet and the protection of personal data.
8. For security reasons, I am **not to share account names and passwords** with anyone unless requested by *Mount Cotton School* staff when servicing the iPad.
9. I am **responsible for the security and use of my iPad while at Mount Cotton State School**. During lunchtime and play breaks students are able to store their equipment in locked classrooms.  
I understand if the above conditions are not followed, I may lose my privilege to use my iPad at Mount Cotton School for such time, determined by the school.

Name of Student: \_\_\_\_\_ Student Signature: \_\_\_\_\_

Name of Parent: \_\_\_\_\_ Parent Signature: \_\_\_\_\_

Date: \_\_\_\_\_ Class: \_\_\_\_\_

Authorised at Mount Cotton State School by:

Principal Name: Meagan Steward

Principal Signature: \_\_\_\_\_ Date: \_\_\_\_\_

## **Mount Cotton State School Before School Arrival Procedures**

At Mount Cotton State School, official “start of instruction” is 8:50am. The first bell at 8:45am signals that classrooms are open so students can get ready for their day.

**Before and after school is not a designated playtime.** Teachers are not rostered for formal playground supervision because they are involved in preparation, meetings and other professional responsibilities. Therefore we have established clear procedures that are aimed at maintain student safety. These are explained below:

### **Students are not to arrive on the school campus until after 8am**

#### **Students arriving at school after 8am:**

- It is strongly recommended these students be booked into Outside School Hours care  
OR
  - Supervised by a parent or a nominated adult until classrooms open.

**Parents of Prep students are to wait in the Prep eating area (near the sandpit).**

**All older siblings of Prep students are to forward to their designated waiting area as outlined below.**

**UNSUPERVISED students** arriving at school **after 8am but before 8:30am** must go directly to and sit in designated areas:

- **Preps and Year 1s:** Under Block B (near tuckshop)

#### **Prep Classes – Arrival and Departure:**

*As outlined in the Prep parent handbook, the school day in Prep commences at 8:50am and it is the responsibility of parents to make supervision arrangements for their children before school. It is preferred that you bring your child to and pick up from the classroom during Term 1, however this is not compulsory. The first bell sounds at 8:45am but classrooms **may** be open earlier. The school day finishes at 2:50pm. Please advise us if you have made special arrangements for pickup.)*

- **Year 2 – Year 5:** Under Block C (area underneath the Year 2 classrooms)
- **Seniors – Year 6:** Outdoor classroom area near Library – if raining, back of a Hall area

Currently, from **8:30 – 8:45am**, students may move around these areas and take part in low-risk activities such as hand-ball or skipping. However, this aspect of the before school procedures is subject to periodical review due to the increasing numbers of unsupervised students arriving before school and their willingness to follow school rules.

Parents who would like their children to have an opportunity for “supervised play” before school are advised to book their children into the Outside School Hours Care programme. OSHC staff members are trained in child-care and first aid so this is the safest option for supervise play before school.

**Adventure playground equipment and all ovals are out-of-bounds to all students and families before and after school (unless students are taking part in a teacher supervised program.)**

Staff have been advised to ensure no student or sibling uses the playground equipment or oval outside school hours, even if family members are present. This follows advice from the Department’s legal advisors and is necessary for the safety of all on the school grounds.

#### **THE LIBRARY is open from:**

**8am for Year 6, year 5 and Year 4** (BYOD Program) students.

**8:30am for all other year levels** for borrowing, reading, board-games and school-related computer usage. Earlier access for students who need to catch-up on school work, do homework or use computers for learning can be negotiated with the Teacher- Librarian. Please contact Mrs Wilkins to discuss this option.

**Thank you to all members of our school community for your anticipated cooperation with and support of these procedures to help keep our students safe before and after school.**

